

Traffic Management App

User Guide

content

section one

Introduction	2
--------------	---

Logging In	2
------------	---

section two

Creating a new Traffic Management Plan	4
--	---

Identifying the location	4
--------------------------	---

Associating with a non-streetworks or unplanned activity	4
--	---

Associating with an EToN Notice	15
---------------------------------	----

Step 1 - Defining the traffic disruption	16
--	----

Enforcement Patterns	17
----------------------	----

Step 2 - Adding traffic management	18
------------------------------------	----

Plotting traffic management types	19
-----------------------------------	----

Step 3 - Publishing and sharing	24
---------------------------------	----

Creating documents	24
--------------------	----

Inserting maps into documents	27
-------------------------------	----

Emailing interested parties	28
-----------------------------	----

Social media, web links and QR codes	30
--------------------------------------	----

section three

Search and Edit	32
-----------------	----

Filters	33
---------	----

Viewing and sharing existing plans	35
------------------------------------	----

Copying plans	37
---------------	----

Settings	38
----------	----

Setting defaults	38
------------------	----

Creating document templates	41
-----------------------------	----

Adding logos	41
--------------	----

Basic functionality	43
---------------------	----

Template tags	44
---------------	----

Floating text	45
---------------	----

Email contacts and templates	46
------------------------------	----

Email contacts and groups	46
---------------------------	----

Email templates	47
-----------------	----

section four

Further information	49
---------------------	----

section one

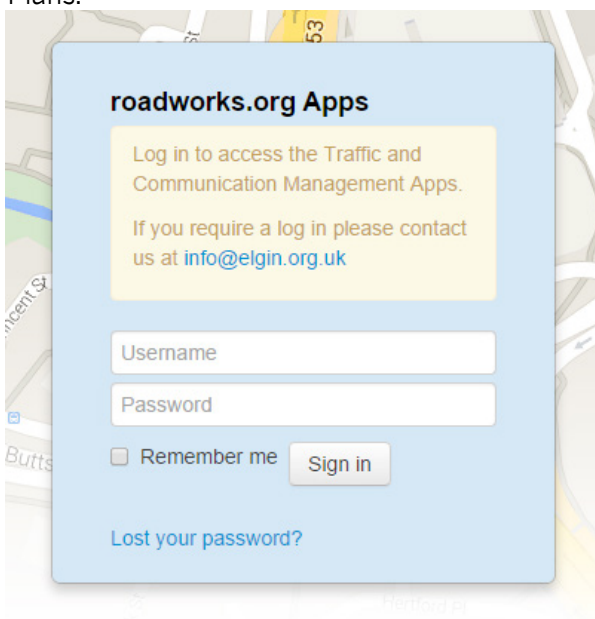
Introduction

The user guide will demonstrate the functionality of the Traffic Management App, which is a web-based tool that makes it easy to create Traffic Management Plans. A user can define temporary road closures, associated diversion routes and other temporary traffic management interventions using a map in just a few simple steps. It is quick and easy to locate, create and publish the information on roadworks.org. Users can follow three simple steps and automatically create Temporary Traffic Regulations Orders, Notices (TTRO/N) and other documents that are associated with planned or unplanned disruptions, or non-streetworks activities.

Elgin continually develops the Traffic Management App to ensure it is as streamlined and as useful as possible. To stay up to date with new features and enhancements, visit our release updates blog at support.roadworks.org.

Logging in

- Go to apps.roadworks.org.
- The user should enter the individual case sensitive credentials that are provided by Elgin, in the box shown below. Each subscribing Local Authority will have a nominated primary point of contact, who will be able to request additional user credentials from Elgin. There are two types of users in the Traffic Management App: Administrators, who are able to access the settings area of the app, delete expired plans and create and edit Traffic Management Plans; and Standard Users, who can create and edit Traffic Management Plans.



roadworks.org Apps

Log in to access the Traffic and Communication Management Apps.

If you require a log in please contact us at info@elgin.org.uk

Username

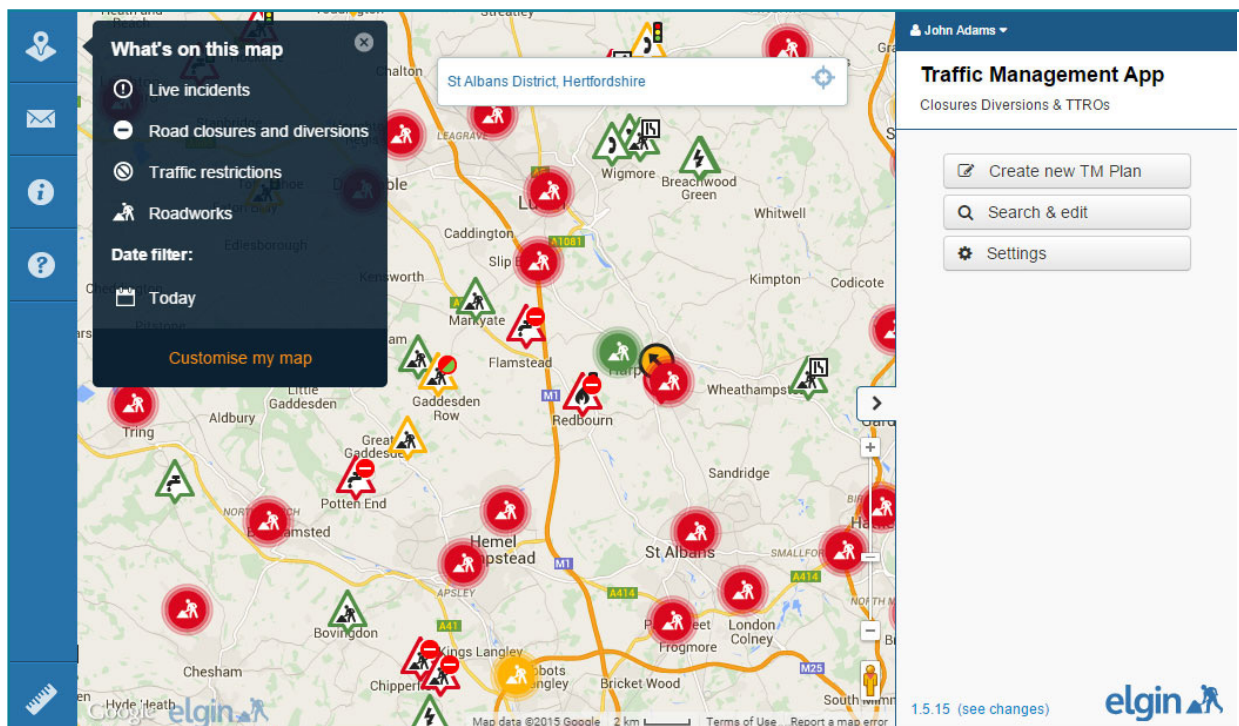
Password

☐ Remember me

[Lost your password?](#)

section one

- Users have the option to have a web browser remember their credentials. Activate this option by clicking the checkbox labelled 'Remember me'.
- Click 'Sign in'.
- Once logged in, the roadworks.org map is on the left with access to all the map layers, as well as some additional measuring tools. On the right is the Traffic Management App menu. (If a user has access to Elgin's Communications Management App too, they can ensure they are in the Traffic Management App by clicking their name and selecting 'Traffic Management' from the drop down menu.)



section two

Creating a new Traffic Management Plan

Users have the option to associate Traffic Management Plans with an existing EToN works reference or plot a location for a Traffic Management Plan that does not have an EToN works reference associated.

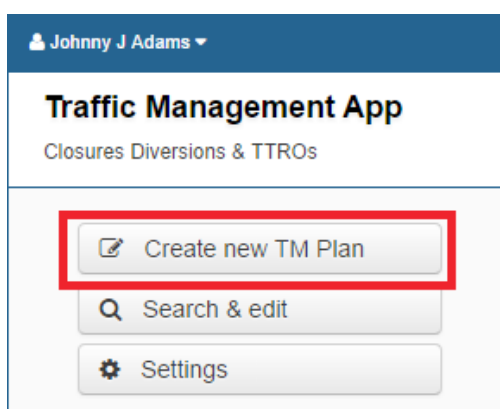
This guide will explore two examples so both options are demonstrated. The first example will demonstrate how to associate with an EToN works reference and show how quick and easy it is to create and publish a Traffic Management Plan; while the second will demonstrate how to create a plan that is not associated with an EToN works reference and will explore all the features available when creating a plan. Creating a Traffic Management Plan and publishing it to roadworks.org is quick and easy.

Identifying the location

- First, begin by identifying the location of the plan on the map. Users can find a location by entering a street name, parish, ward, district or local authority in the 'Map search'. Users can also search by USRN or works reference number.
- The crosshair icon to the right of the 'Map search' box will zoom the map to the user's current location. This feature is not available in Internet Explorer 8.
- Check that the relevant data layers are switched on. This can be achieved by expanding the 'Map layers' menu item.

Associating with a non-streetworks or unplanned activity

- From the main menu click 'Create a new TM Plan'.



section two

- This time, don't select the 'Associate with EToN notice' checkbox. Instead, once a suitable location for the disruption has been identified on the map, click 'Plot location'

Disruption details

☐ Associate with EToN notice

- Click on the map where the traffic disruption is located. An icon will appear.



section one

- Enter a unique name or reference for this Traffic Management Plan and select a category. Users may consider agreeing on a naming convention (e.g road name followed by intervention) for their Traffic Management Plans within their team to make plans easier to find at a later date as they will be able to copy them for future re-use. (The copy functionality will be explored later in this guide.)

Johnny J Adams

Create new TM Plan

Home

Save

Step1

Step2

Step3

Disruption details

Accident on A10 near Park Rd

Category (Please Select)

Category (Please Select)

Incident

Incident

Accident

Weather event

Public event

Sport event

Entertainment event

Market

Carnival / parade / street party

Other

Streetworks / License

Streetworks

Skip

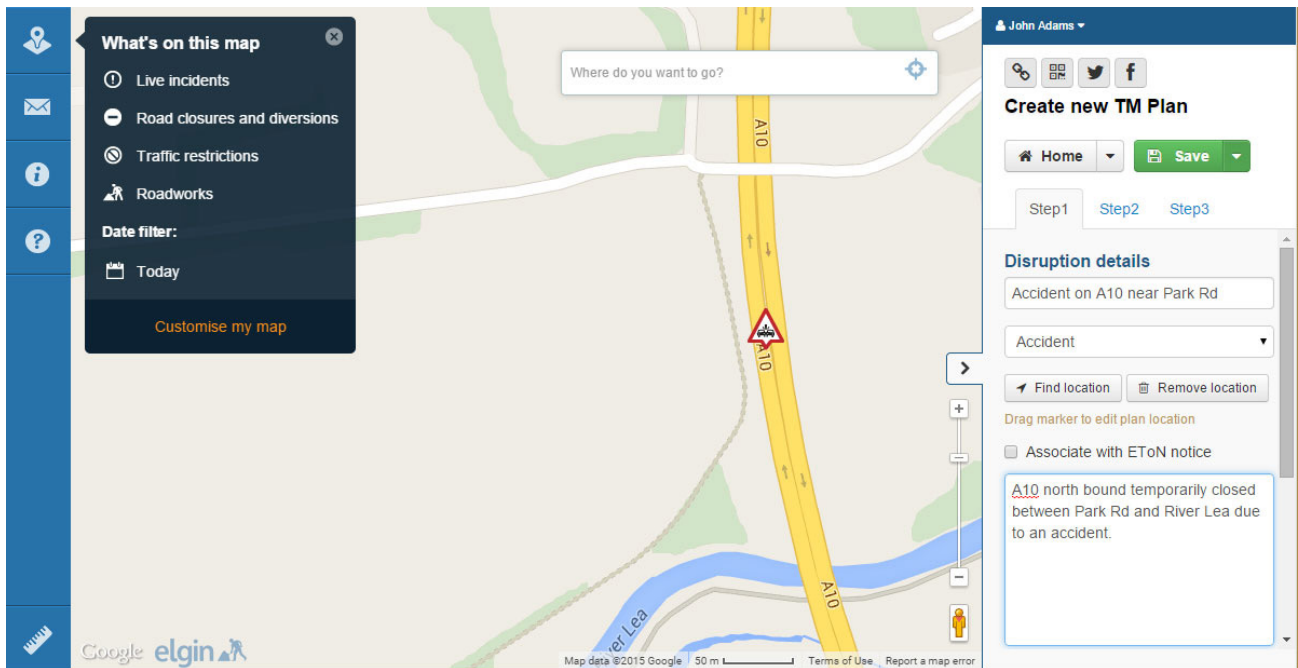
Scaffolding

Materials on highway

Obstruction

section two

- Once the user has selected a works activity category, the icon will change to one representing that category. Give the plan a description. This description will be published so roadworks.org users can find out more information about your Traffic Management Plan.



- Once the user has selected a works activity category, the icon will change to one representing that category. Give the plan a description. This description will be published so roadworks.org users can find out more information about your Traffic Management Plan.

Dates

28/10/2014

Set time

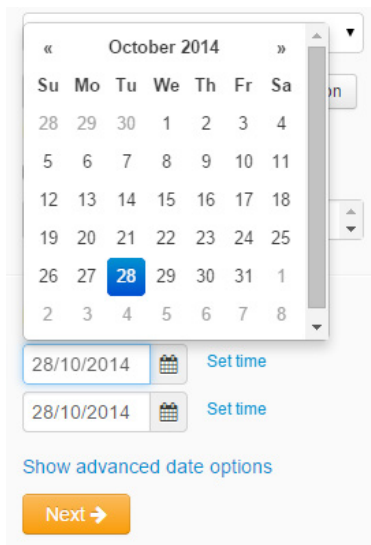
28/10/2014

Set time

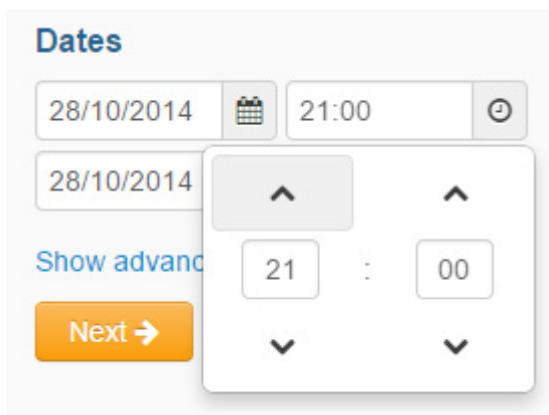
Show advanced date options

section two

- Select a start date and an end date by clicking on the date fields. A calendar appears. Click on the correct dates.



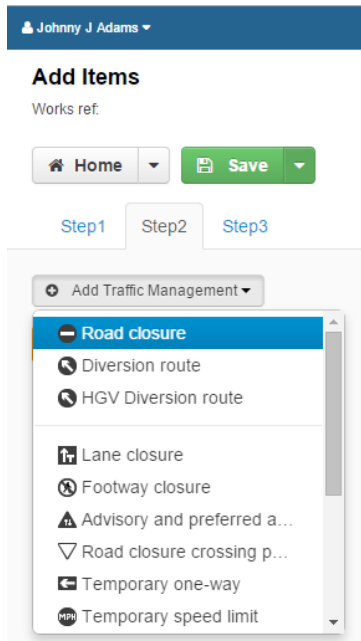
- Users can also set a start and end time for their plans by clicking 'Set time', then clicking within the box to reveal the time picker.



- Once the correct time has been selected, click 'Next'.

section two

- Step 2 allows users to create the Traffic Management Plan, by adding individual traffic management interventions such as road closures or diversion routes. Click 'Add Traffic Management' and choose the correct traffic management type, in this case a road closure.



The screenshot shows the 'Add Items' form in Step 2. At the top, there's a user profile for 'Johnny J Adams'. Below it, the 'Works ref.' field is empty. There are 'Home' and 'Save' buttons. The 'Step1', 'Step2', and 'Step3' tabs are visible, with 'Step2' being the active tab. A dropdown menu labeled 'Add Traffic Management' is open, showing a list of options: 'Road closure' (selected), 'Diversion route', 'HGV Diversion route', 'Lane closure', 'Footway closure', 'Advisory and preferred a...', 'Road closure crossing p...', 'Temporary one-way', and 'Temporary speed limit'.

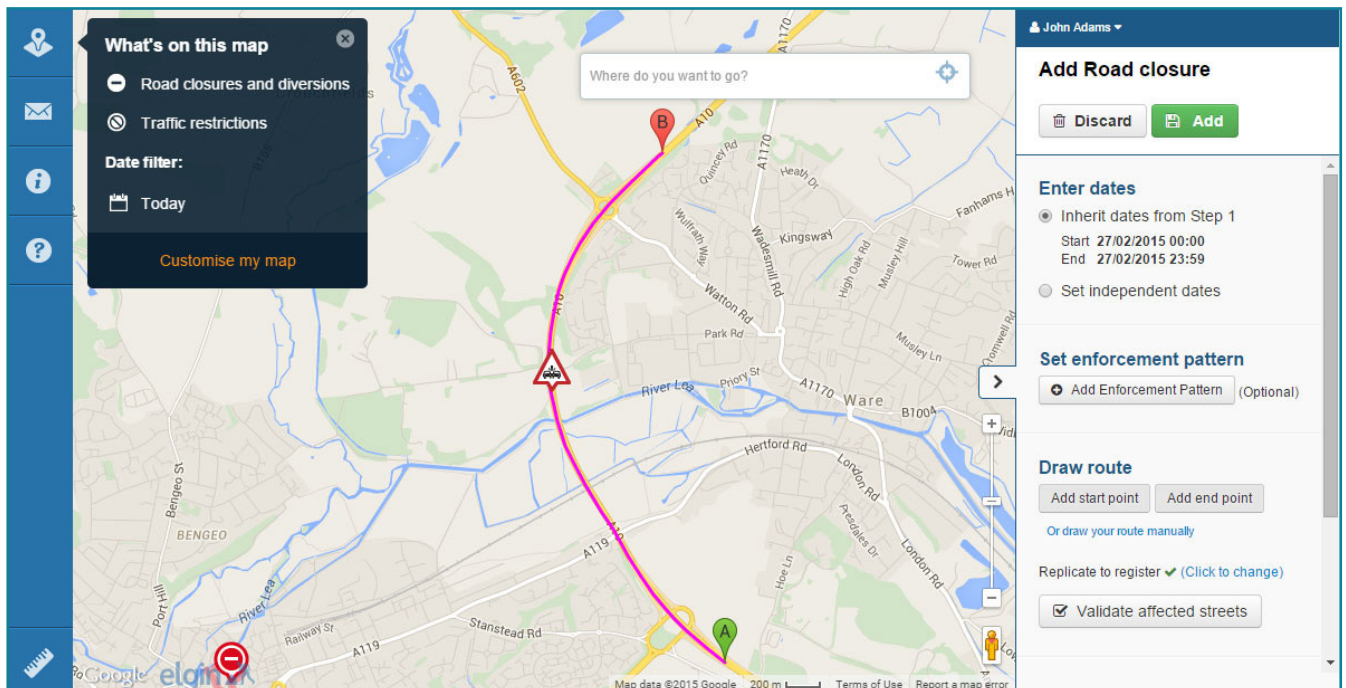
- For this example, inherit the Traffic Management Plan dates for this works activity that were selected / created in Step 1. Users also have the option to set independent dates for the independent traffic management interventions. Do will not add an enforcement pattern.



The screenshot shows the 'Enter dates' and 'Set enforcement pattern' sections. Under 'Enter dates', there are two radio buttons: 'Inherit dates from NSA' (selected) and 'Set independent dates'. Below the 'Inherit dates from NSA' option, the 'Start' date is '28/10/2014 21:00' and the 'End' date is '28/10/2014 23:59'. Under 'Set enforcement pattern', there is a button labeled 'Add Enforcement Pattern (Optional)'.

section two

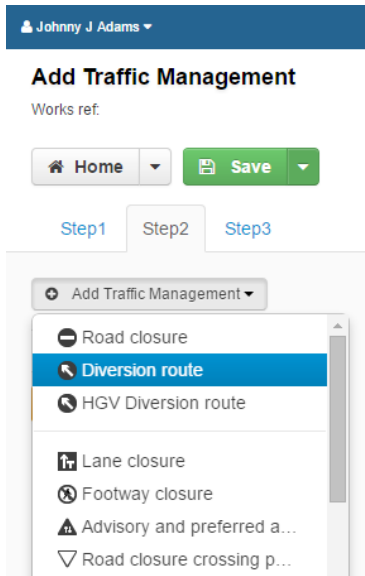
- Place a closure on the map by first clicking 'Add start point', then clicking on the map where the closure starts. Do the same for the end point. A line is automatically placed between the start and end points following the shortest most appropriate route.



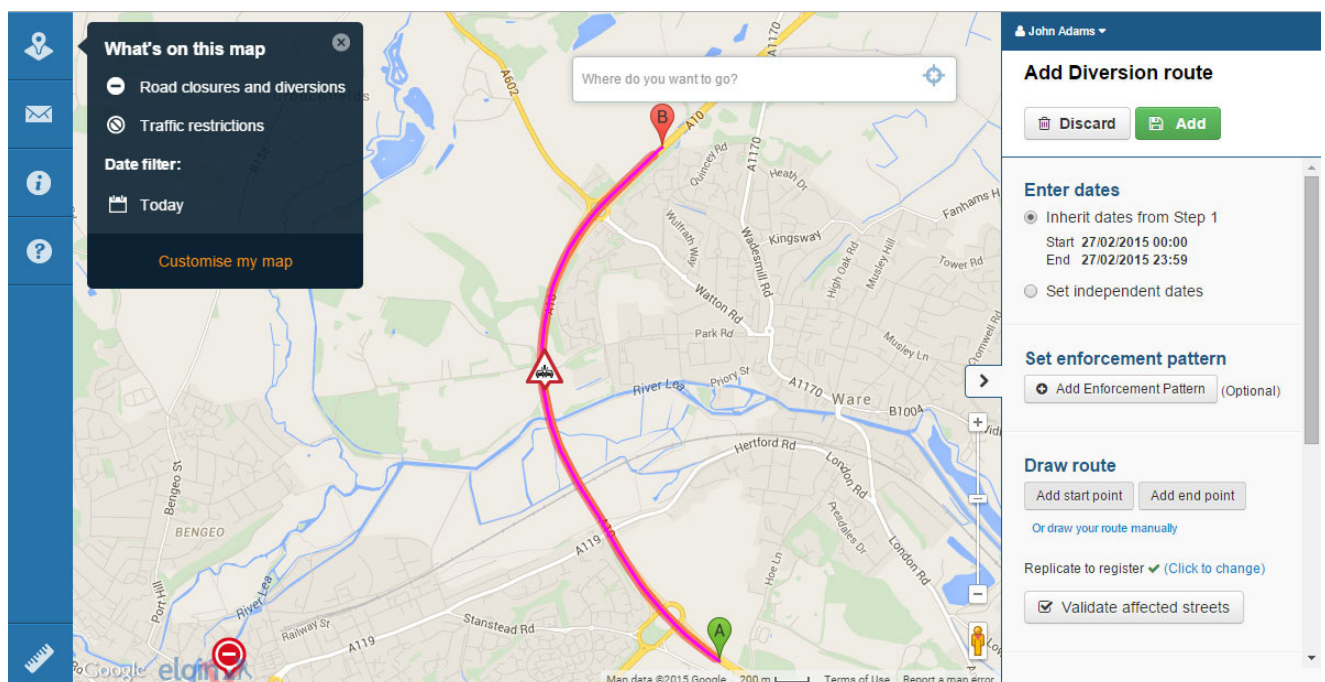
- For this example, do not make any changes to the suggested closure. By default, the closure will be named after the street on which the A point sits. Rename it if you wish. Leave it as suggested for this example and leave the closure description as the default (applied in the Administrator Settings).
- Click 'Add'.

section two

- Users will now be redirected back to step 2 for an overview. Users can add more traffic management interventions. Now add a diversion route around the closure. This is a simple process that works in the same way as adding the closure.

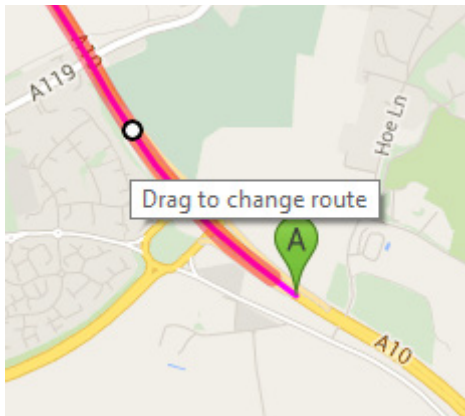


- Now choose to inherit the dates from the work and not add an enforcement pattern. Add the start and end points. The line automatically takes the shortest most appropriate route from point A to point B as in the closure.



section two

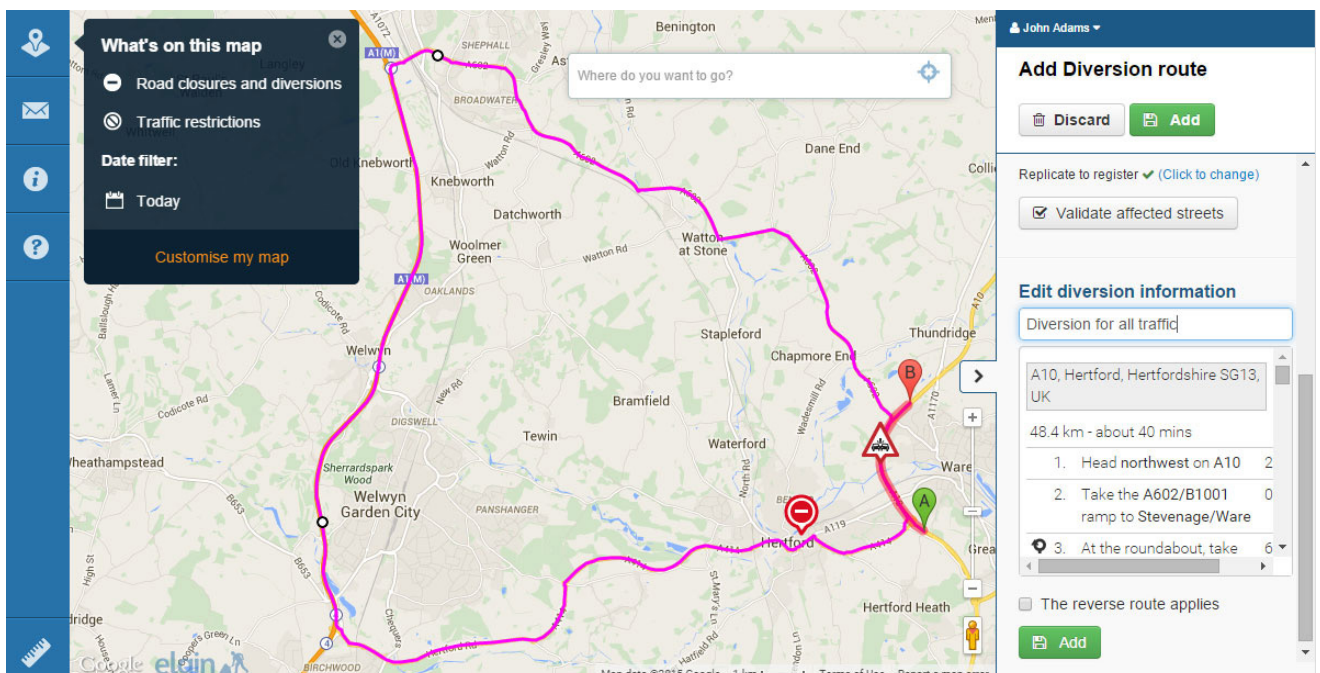
- As this is a diversion, the line should move around the closure. This process requires the network intelligence of the user, using the Google Map data and additional data layers to identify an appropriate diversion, along the same classification of road. To achieve this, simply hover the cursor over the line until a white waypoint appears.



- Drag the waypoint to the desired route. Create as many waypoints as is needed. The route must follow the waypoints. For particularly long routes, start at point A and move the map, following the route, dropping waypoints along the way.


The text instructions for the directions are updated as the route changes. Check the directions. Edit them if required.

- Name the diversion





section two

- Check the box next to 'The reverse route applies' if that is the case.
- When the desired route has been achieved, click 'Add'.
- When the traffic management plan is completed, click 'Next' to move on to step 3.

 Johnny J Adams ▾

Add Traffic Management


 Home ▾


 Save ▾


Step1

Step2

Step3

 Add Traffic Management ▾

 A10

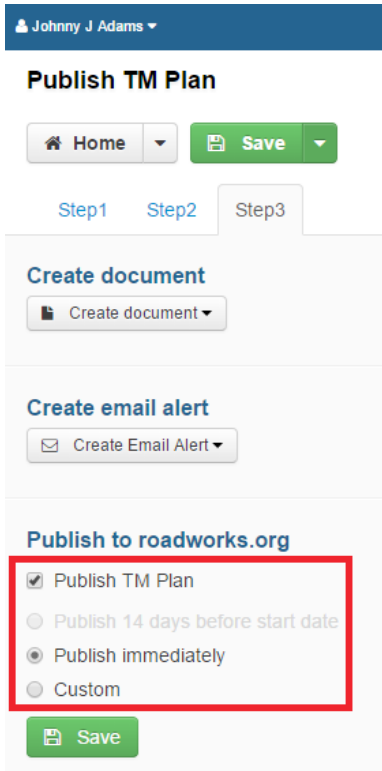
 Diversion for all traffic

Next →

- In Step 3, users have the options to attach a document and to create an email alert. In this example, these options will be ignored but will be explored in the next example. Users also have the option to save their traffic management plan without publishing it but in this example, check the 'Publish to roadworks.org' box.

section two

- Depending on the start date of the Traffic Management Plan, users can now choose to 'Publish 14 days before the start date', 'Publish immediately', or publish a 'Custom' number of days before the start date of the plan. As in this example the Traffic Management Plan has been created surrounding a closure that has occurred today, there is only the option to choose to 'Publish immediately'.



Johnny J Adams ▾

Publish TM Plan

Home ▾ Save ▾

Step1 Step2 Step3

Create document

Create document ▾

Create email alert

Create Email Alert ▾

Publish to roadworks.org

☒ Publish TM Plan

☐ Publish 14 days before start date

☒ Publish immediately

☐ Custom

Save

- Click 'Save'.
- Now that the plan is saved, some sharing options are presented at the top of the Traffic Management App menu, the left hand icon is the option to share the web link to this plan.



Johnny J Adams ▾

Publish TM Plan

Name: Accident on A10 near Park Rd

Published on: 28/10/2014 16:08

Home ▾ Save ▾

Link QR Twitter Facebook

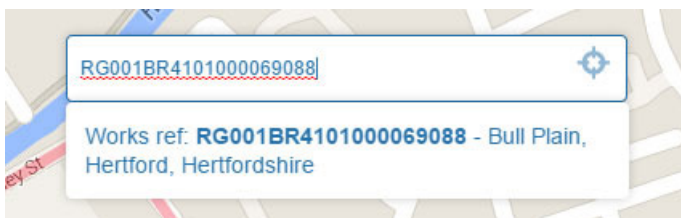
section two

- Click the web link icon. A new window will open to roadworks.org at the location of the Traffic Management Plan that has just been created. Users can copy the address in the URL bar if they would like to share it. A dialogue box will be open, containing information about the closure, including a link to the related work and other information that has been populated.
- Now click on the blue line, which reveals more information about the diversion route, including the directions.
- Note how as you zoom in and out of the map, the closures and diversions will become visible or not depending on their length, but the icons can always be seen.

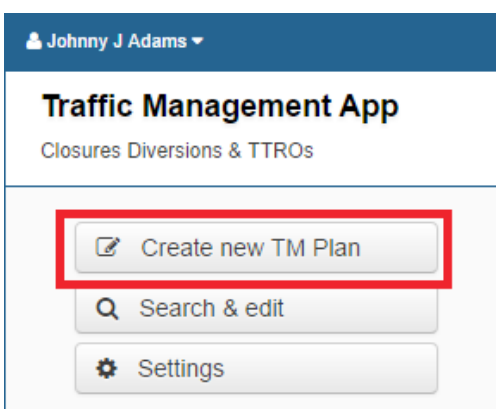
Associating with an EToN Notice

The last example demonstrated how easy it is to quickly create and publish a Traffic Management Plan to roadworks.org. The next example will explore how to create a Traffic Management Plan associated with an EToN notice. Other functionality, such as enforcement patterns will be demonstrated, as well as how easy it is to attach pre-completed documents based on templates and send email alerts to interested parties.

- First, locate the works by searching for the location, USRN or works reference number in the 'Map search' box.



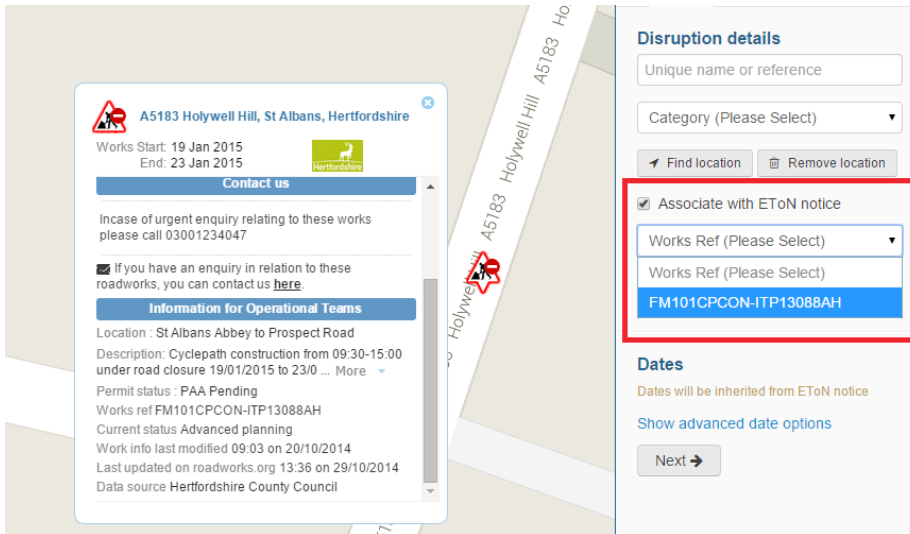
- Zoom close to the work and take note of the works reference number (if not already done).
- From the main menu, click 'Create a new TM Plan'.



section two

Step 1 - Defining the traffic disruption

- This time, select the 'Associate with EToN notice' checkbox.
- A drop-down menu will appear that reads 'Works Ref (Please Select)'. The menu will show the works reference numbers for all the works visible on the map. Select the correct work from the dropdown menu.



A5183 Holywell Hill, St Albans, Hertfordshire

Works Start: 19 Jan 2015
End: 23 Jan 2015

Contact us

Incase of urgent enquiry relating to these works please call 03001234047

☒ If you have an enquiry in relation to these roadworks, you can contact us [here](#).

Information for Operational Teams

Location : St Albans Abbey to Prospect Road
Description: Cyclepath construction from 09:30-15:00 under road closure 19/01/2015 to 23/01/2015 ... More
Permit status : PAA Pending
Works ref FM101CPCON-ITP13088AH
Current status Advanced planning
Work info last modified 09:03 on 20/10/2014
Last updated on roadworks.org 13:36 on 29/10/2014
Data source Hertfordshire County Council

Disruption details

Unique name or reference

Category (Please Select)

☒ Associate with EToN notice

Works Ref (Please Select)

Works Ref (Please Select)

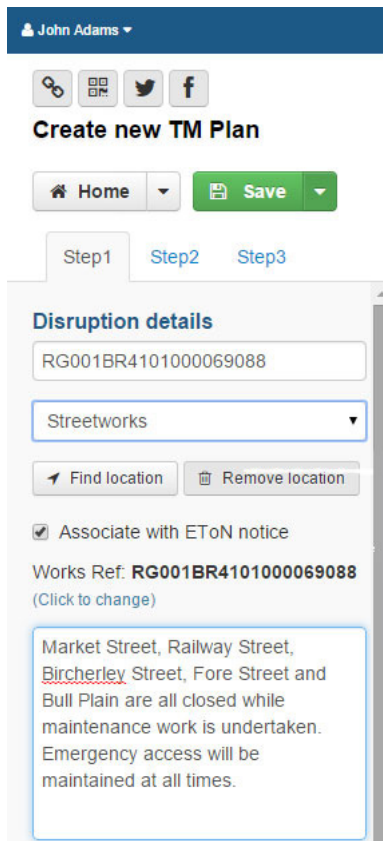
FM101CPCON-ITP13088AH

Dates

Dates will be inherited from EToN notice

[Show advanced date options](#)

- Enter a unique name or reference for this Traffic Management Plan and select a category. For this example, select Streetworks. Also give the plan a description as this information will be valuable to road users.



John Adams

[Link](#) [Grid](#) [Twitter](#) [Facebook](#)

Create new TM Plan

Step1 Step2 Step3

Disruption details

RG001BR4101000069088

Streetworks

☒ Associate with EToN notice

Works Ref: **RG001BR4101000069088**
(Click to change)

Market Street, Railway Street, Bircherley Street, Fore Street and Bull Plain are all closed while maintenance work is undertaken. Emergency access will be maintained at all times.

section two

Enforcement Patterns

- Click 'Show advanced date options'. Here, when not associating plans with an EToN notice, users will be able to specify a start and end date, as well as start and end times, for the Traffic Management Plan. Here is where users also specify an enforcement pattern.

Dates

Dates will be inherited from EToN notice

Start 19/01/2015 00:00

End 23/01/2015 23:59

+ Add Enforcement Pattern (Optional)

Next →

- Click 'Add Enforcement Pattern'. An enforcement pattern allows users to display the times and days that the Traffic Management Plans are in force so when members of the public view the information on roadworks.org, they do not incorrectly assume that the plan is in force 24 hours a day.

Add Enforcement Pattern

Days of week

☒ Monday
 ☒ Friday

☒ Tuesday
 ☐ Saturday

☒ Wednesday
 ☐ Sunday

☒ Thursday

Start time

11:00

End time

16:00

Include bank holidays

☐ Yes
 ☐ No
 ☒ Don't show

Monday-Friday 11:00-16:00

Add
Discard

Users have the option to include information about bank holidays and can add multiple enforcement patterns if the plan is in force at different times on different days, for example weekdays and weekends. Click 'Add' when the enforcement pattern has been created and repeat this process to add additional enforcement patterns.

section two

- The enforcement pattern now appears in the 'Dates' section. Users can click on the enforcement pattern to edit it or the red cross to delete it. Click 'Next'.

Dates

Dates will be inherited from EToN notice

Start 19/01/2015 00:00
End 23/01/2015 23:59

+ Add Enforcement Pattern (Optional)

Monday-Friday 11:00-16:00 ✕

Next →

Step 2 - Adding Traffic Management

- Click 'Add traffic management'. Users have the option of many different traffic management types beyond road closures and diversions. Each is characterised by a different coloured line and symbol when displayed on roadworks.org. In this example we will stick with closures and diversions.

Step1 Step2 Step3

+ Add Traffic Management ▾

- Road closure
- Diversion route
- HGV Diversion route
- Lane closure
- Footway closure
- Advisory and preferred a...
- Road closure crossing p...
- Temporary one-way
- Temporary speed limit

- Click 'Road closure'.

section two

- Inherit the dates and enforcement pattern from Step 1. If users inherit the dates, they will be updated on the traffic management when they are updated on the associated ETon notice.

Enter dates

☒ Inherit dates from FM101CPCON-ITP13088AH
Start 19/01/2015 00:00
End 23/01/2015 23:59

☐ Set independent dates

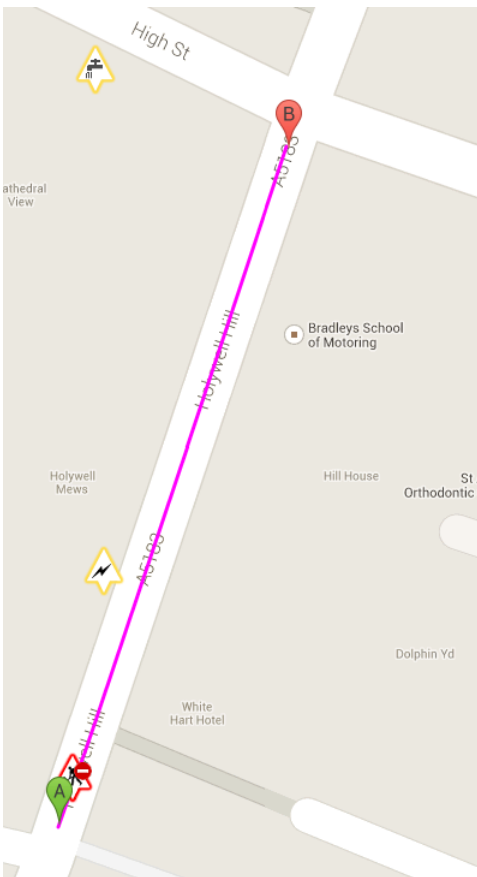
Set enforcement pattern

☒ Inherit from TM Plan

☐ Set independent pattern

Plotting traffic management types

- Add the start point, and the end point. Move the closure if you need to by hovering over the line until a waypoint appears and drag it to the desired route.



Enter dates

☒ Inherit dates from FM101CPCON-ITP13088AH
Start 19/01/2015 00:00
End 23/01/2015 23:59

☐ Set independent dates

Set enforcement pattern

☐ Inherit from TM Plan
☐ Set independent pattern
☒ Add Enforcement Pattern (Optional)

Draw route

[Or draw your route manually](#)

Replicate to register ✓ [\(Click to change\)](#)

☒ Validate affected streets

Edit closure information

Holywell Hill

Edit closure description
Emergency access will be maintained at all times. [\(Click to change\)](#)

section two

- Users can choose to replicate the plan to your streetworks register. The 'Validate affected streets' drop down will allow users to de-select roads that should not be included in the replication or any document attachments. (Contact Elgin to set up functionality.)

Replicate to register ✓ (Click to change)

☒ Please select streets ▾

Select / Deselect all

Holywell Hill
37308870 ✓


- Name the closure. Users can edit the closure description if desired.

Edit closure information

Holywell Hill Closure

Edit closure description

Emergency access will be maintained at all times. (Click to change)

 Add

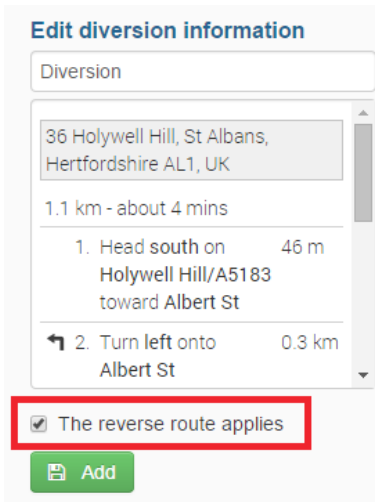
- Click 'Add'.
- In this example, two diversion routes will be added: One for regular traffic and another for Heavy Goods Vehicles. To create the diversion for regular traffic, select the 'Diversion route' option from the 'Add Traffic Management' drop down menu.

+ Add Traffic Management ▾

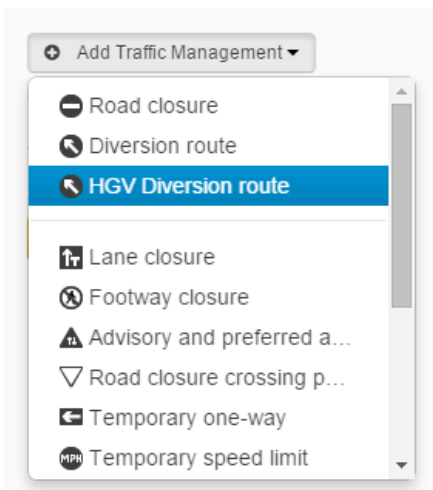
☒ Road closure
☒ **Diversion route**
☐ HGV Diversion route
☐ Lane closure
☐ Footway closure
☐ Advisory and preferred a...
☐ Road closure crossing p...
☐ Temporary one-way
☐ Temporary speed limit

section two

- If the diversion also applies in the reverse direction, check the box next to 'The reverse route applies' so this information is including in the informational text box associated with this diversion on roadworks.org. Click 'Add'.



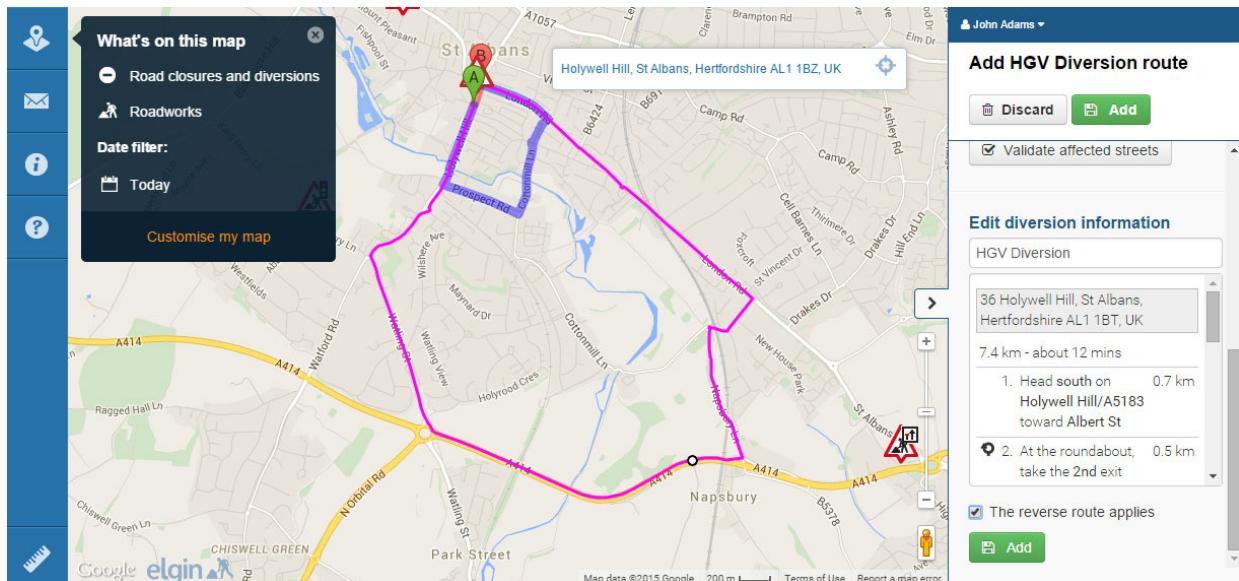
- To add a heavy goods vehicle diversion route, select 'HGV Diversion route' from the 'Add Traffic Management' drop down menu. Users may need to create alternative diversion routes for HGVs if they see that there are bridges on the map along the diversion route for regular traffic that may have height and weight restrictions, or if the route for regular traffic is unsuitable for other reasons.



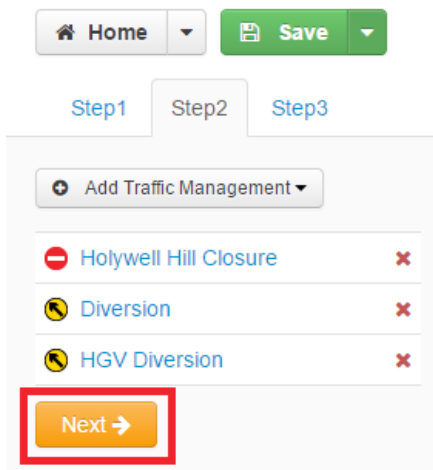
- Inherit the dates from Step 1 and set an independent enforcement pattern, choosing the same days and times as for the last route.

section two

- Drop the start and end points on the desired locations and drag waypoints to achieve the desired route, starting from point A and working towards point B. Name the route properly and ensure the text directions are correct. Check 'The reverse route applies' if it does and click 'Add'.



- When all traffic management for this plan has been added, click 'Next' to get to step 3.



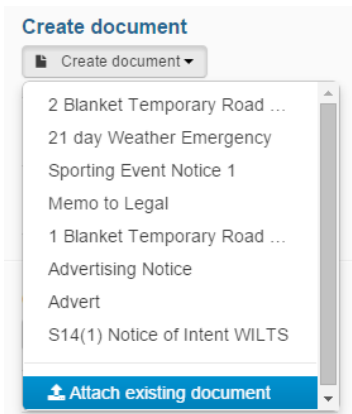
section two

Step 3 - Publishing and Sharing

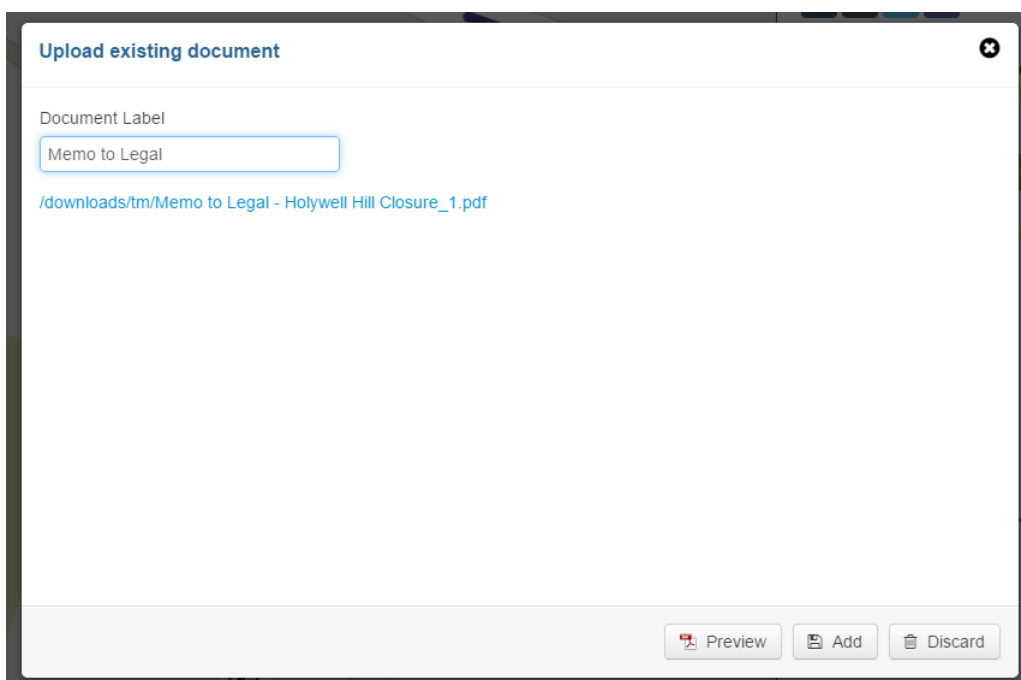
Creating Documents

- To create a document based on a template that has already been set up (which will be explained later in this guide), or to attach an existing PDF, click create document. This example will demonstrate how to add one of each.

To attach an existing document, select this option from the bottom of the menu.

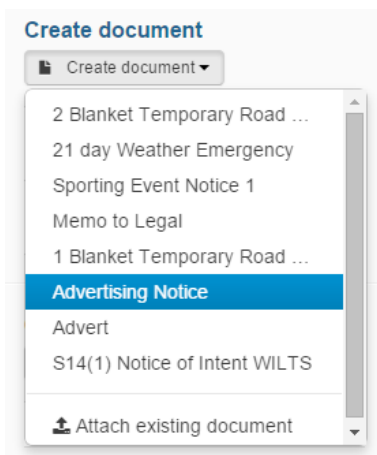


- A box appears where users will have to give the document a label. Click 'Upload a PDF' and a window will open allowing users to explore the contents of their computer. Only PDF documents are supported. Select the PDF to attach and click open. Users can choose to preview this document by clicking 'Preview'. Click 'Add'.

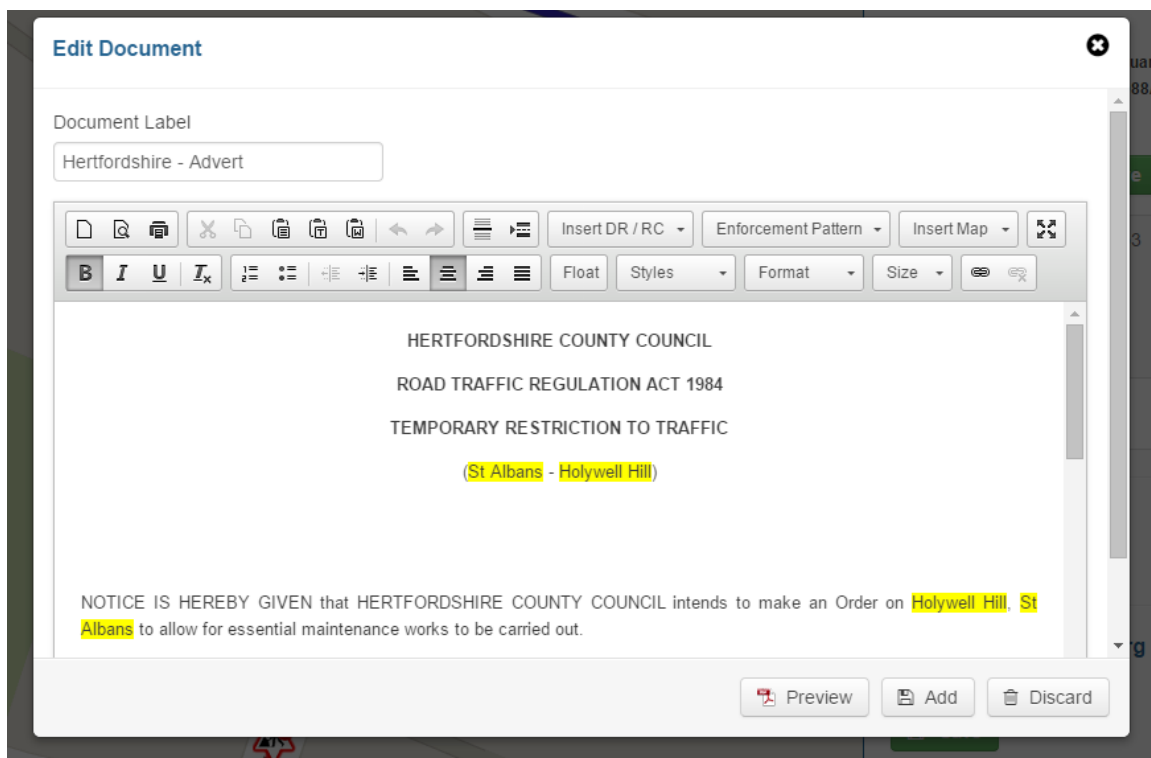


section two

- To add a document based on a template that has already been set up, choose that template from the 'Create document' drop down menu.



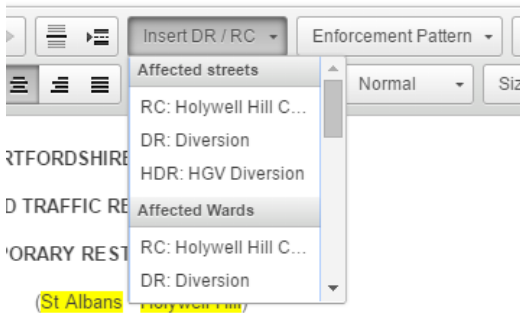
- A document editor appears, pre-completed with the template text, together with information drawn from the Traffic Management Plan that has been created. Non-highlighted text remains the same each time this template is used. Text highlighted in yellow is drawn from the Traffic Management Plan and some text may be highlighted in red, prompting the user to manually complete this information, as it may not be able to be drawn from the Traffic Management Plan.



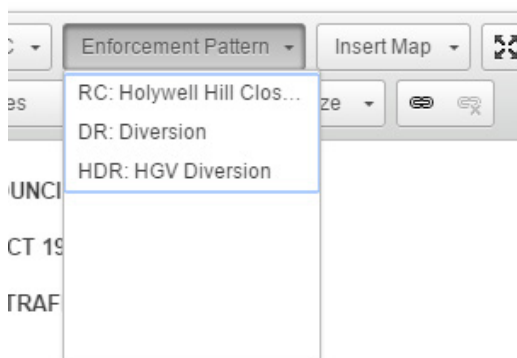
Many of the tools that appear at the top of the editor are standard formatting tools that would usually be found in word processing programs. These will be explored later.

section two

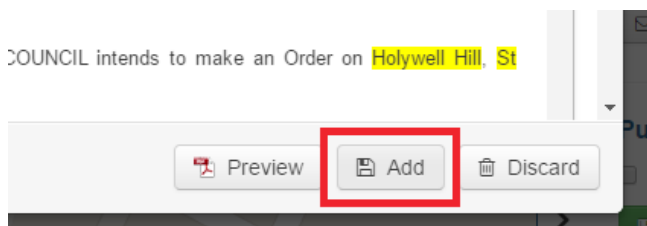
- Users can insert information about closures, diversions, or any other traffic management types by clicking 'Insert DR / RC' and selecting the information to be inserted. For each traffic management type that is created users can insert the affected streets, wards, parishes, districts, Highways Authorities and USRNs.



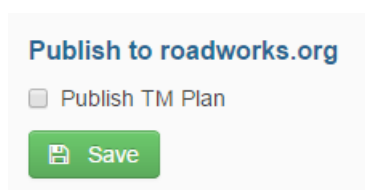
- Users can also include the enforcement pattern information about each of the traffic management types.



- In order to insert a map of a Traffic Management Plan into the document, or link to it, the plan must first be saved so a map is generated. Save the document by pressing 'Add'.



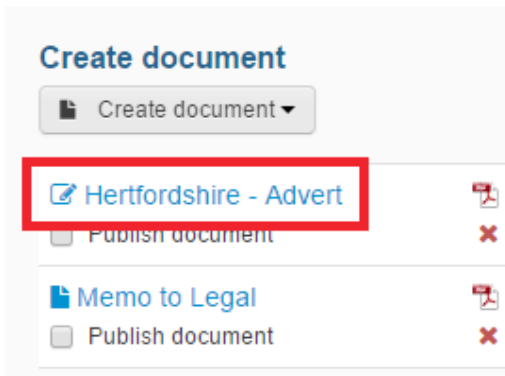
- Then press 'Save'.



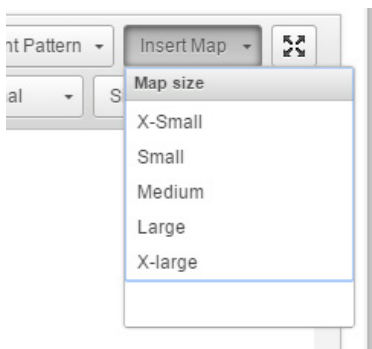
section two

Inserting Maps into Documents

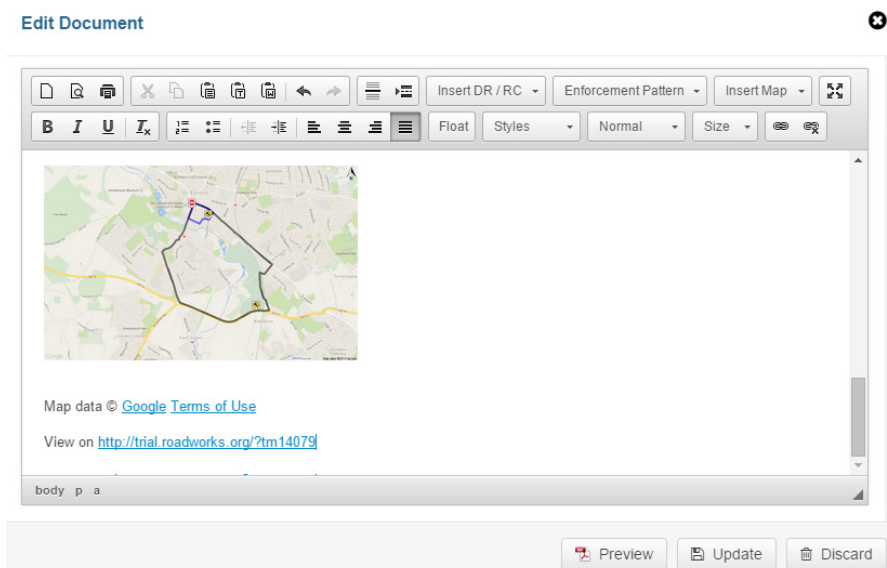
- A map is now generated in the background that it can be inserted into the document. Make sure the plan is fully visible on the map, then click on the name of the document to re-enter the document editor.



- An 'Insert map' button now appears in the editor. Clicking it will reveal a dropdown list with a choice of map sizes.



- When inserted, the map will include a link to the plan on roadworks.org.

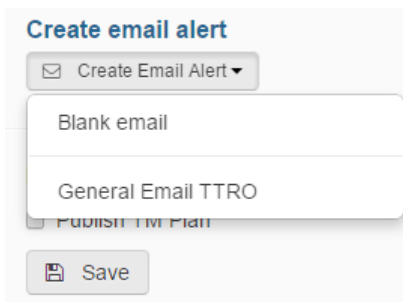


- Click 'Update' to save the document with the map now included.

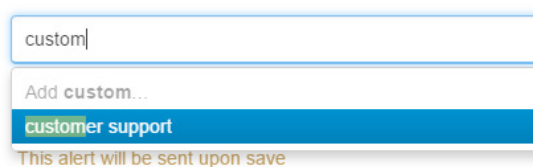
section two

Emailing Interested Parties

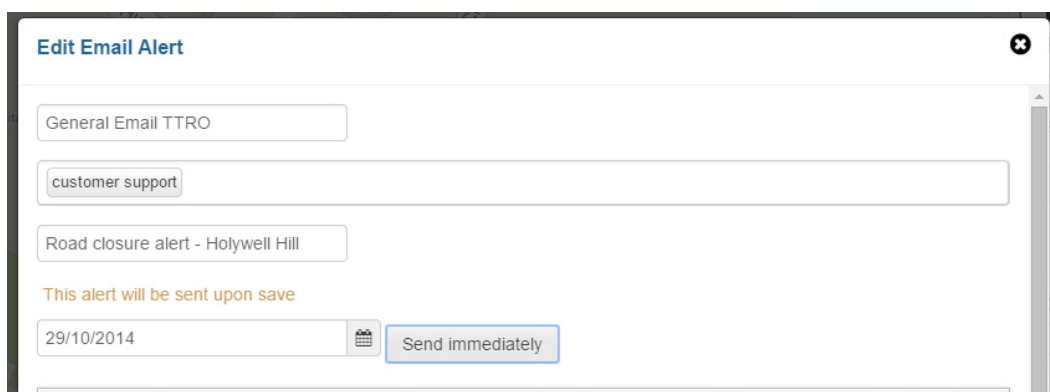
- Users can create an email alert to share the Traffic Management Plan with interested parties. The creation of email templates and email recipients and groups will be explored later in this guide. Click 'Create email alert'.



- Users can start with a blank email or choose an existing template in the same way that they can for documents. Select a template.
- There will be a prompt to enter recipients. Users can either type an email address manually or select a recipient or group from the drop down list that appears when the recipient box is clicked. As users type, the search results will narrow.

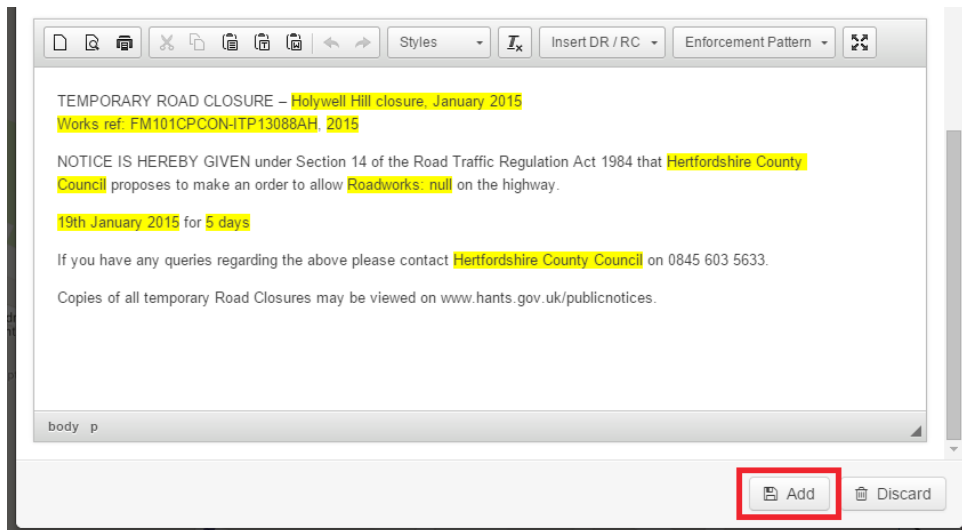


- Give the email a subject. Select the date when the email is to be sent. If 'Send immediately' is clicked, the email will be sent when the Traffic Management Plan is saved.

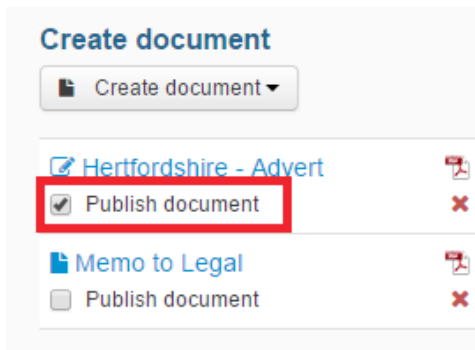


section two

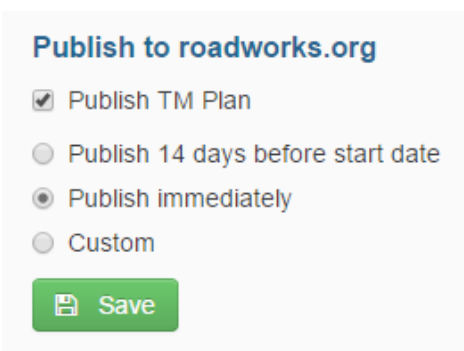
- The text editor for the email alert is similar but simpler than the document editor. When the email is complete, click 'Add'.



- Check the box next to 'Publish document' below any documents you choose to publish.



- Check the box next to 'Publish TM Plan', then choose 'Publish immediately'. Users also have the option to publish the plan 14 days before its start date (recommended) or a default number of days before the start date.

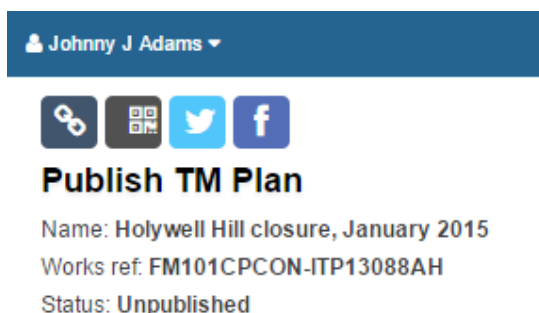


- Click 'Save'.

section two

Social Media, Web Links and QR Codes

- Now that the Traffic Management Plan is published, users can share it by clicking on the icons along the top of the Traffic Management App menu.

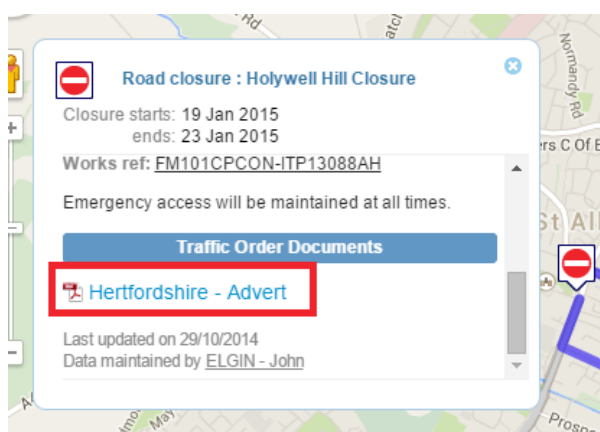


- Users can choose to replicate the plan to your streetworks register. The 'Validate affected streets' drop down will allow users to de-select roads that should not be included in the replication of any document

From left to right, users can copy the hyperlink of the Traffic Management Plan; users can create a printable QR code, which can be added to physical signage, allowing people to view the details of the Traffic Management Plan on their mobile device; users can share details of the Traffic Management Plan on twitter; and users can share it on Facebook. Clicking each of these buttons will open a new window.

- Click on the link button. Users will be directed to roadworks.org at the location of the Traffic Management Plan, with a dialogue box open containing details about the closure such as enforcement patterns and published documents. Clicking the line or icon of other traffic management types will display the same information and, in the case of diversion routes, direction information. When hovering over the line or icons of any traffic management type, a box will appear with title, description and date information for that traffic management type.

Scroll down inside the box for the closure and click on the title of the published document.



section two

- A new tab will open, containing the document, which can be downloaded as a PDF.

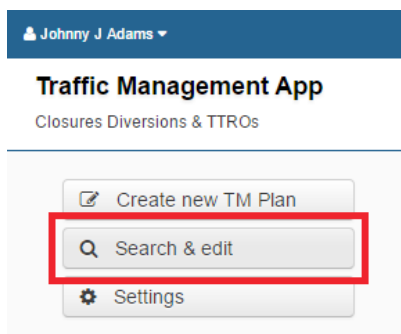


section three

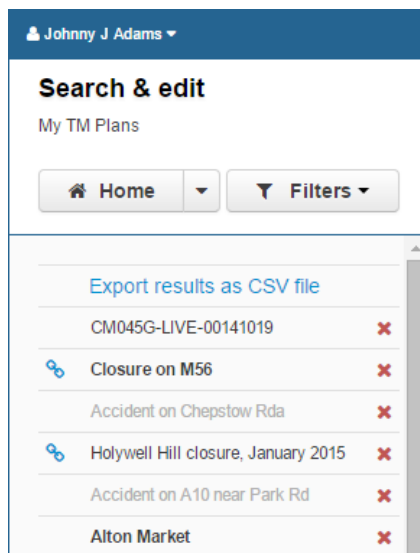
Search & Edit

The Traffic Management App saves time by making it simple to reuse Traffic Management Plans.

- From the main menu, click 'Search & edit'. Here users can view, edit, copy or delete Traffic Management Plans.



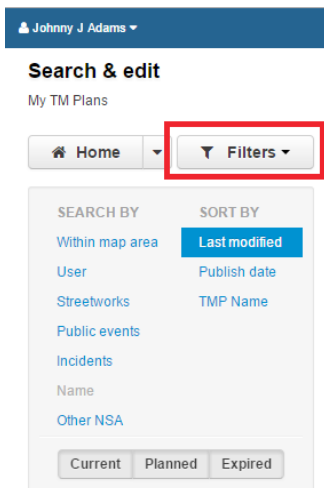
- Plans that have not yet started appear in normal weight font; Active plans are bold; Published Traffic plans have a link next to them; and Expired plans are grey (and the edit option is disabled). Only Administrators can delete expired Traffic Management Plans.



section three

Filters

- To help make finding plans easier, filters can be applied to the list. Click 'Filters'.



Johnny J Adams ▾

Search & edit

My TM Plans

Home ▾ **Filters ▾**

SEARCH BY

Within map area

User

Streetworks

Public events

Incidents

Name

Other NSA

SORT BY

Last modified

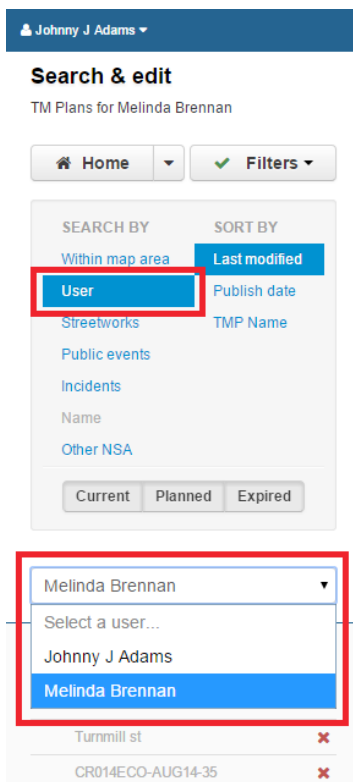
Publish date

TMP Name

Current Planned Expired

Users can choose to search by plans within a map area, plans by other users in the organisation, plans associated with streetworks, or plans associated with public events, incidents or non-streetworks activities. Users can sort the results by the order in which they were last modified, publication date and alphabetically by name.

- To search for plans made by another user, click 'User' in the 'SEARCH BY' menu, then select the correct name from the drop down list that appears.



Johnny J Adams ▾

Search & edit

TM Plans for Melinda Brennan

Home ▾ **Filters ▾**

SEARCH BY

Within map area

User

Streetworks

Public events

Incidents

Name

Other NSA

SORT BY

Last modified

Publish date

TMP Name

Current Planned Expired

Melinda Brennan ▾

Select a user...

Johnny J Adams

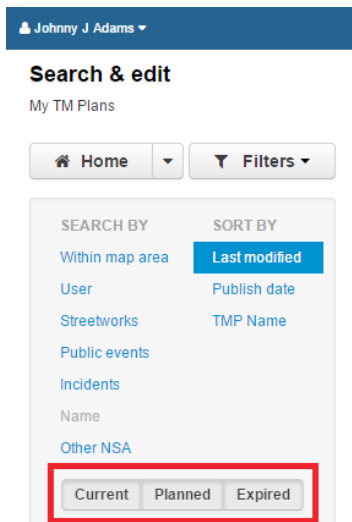
Melinda Brennan

Turnmill st ✕

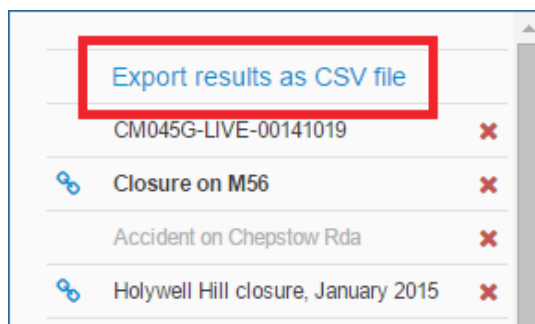
CR014ECO-AUG14-35 ✕

section three

- At the bottom of the filters box are toggles for the display of current, planned or expired plans.



- Users can export a CSV of the Traffic Management Plans by clicking the 'Export results as a CSV file' hyperlink.



- When the desired plan has been located, click on its name and to see the options to View, Edit and Copy. The red 'x' to the right of the Traffic Management Plan's name allows users to delete that plan.



section three

Viewing and Sharing Existing Plans

- Clicking 'View' will open a read-only view of the Traffic Management Plan. This view is handy for sharing the plan without editing it.

Johnny J Adams

TM Plan read-only

You are viewing this Traffic Management Plan in read-only mode. Any changes made here will not be saved.

Edit TM Plan

Name: Closure on M56
Works ref: 2848252
Published on: 03/11/2014 14:39

Home

Save

Step1

Step2

Step3

Disruption details

Closure on M56

Streetworks

Find location

Remove location

☒ Associate with EToN notice

Works Ref: 2848252 (Click to change)

Disruption description

Dates

Dates will be inherited from EToN notice
Start 10/10/2014 21:44
End 09/11/2014 10:00

Add Enforcement Pattern

(Optional)

Monday-Friday 03:00-10:00

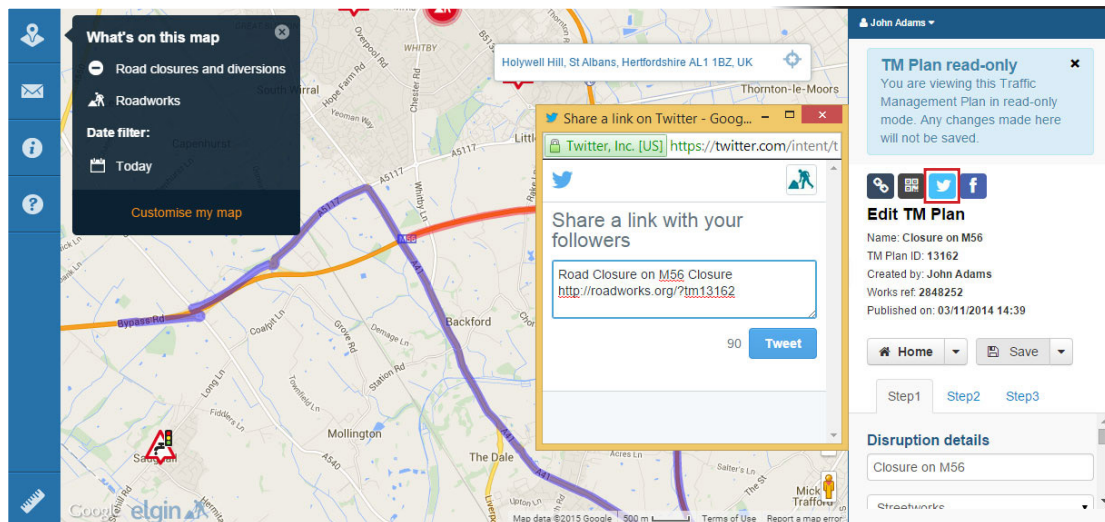
Saturday, Sunday 09:00-1...

Next

35

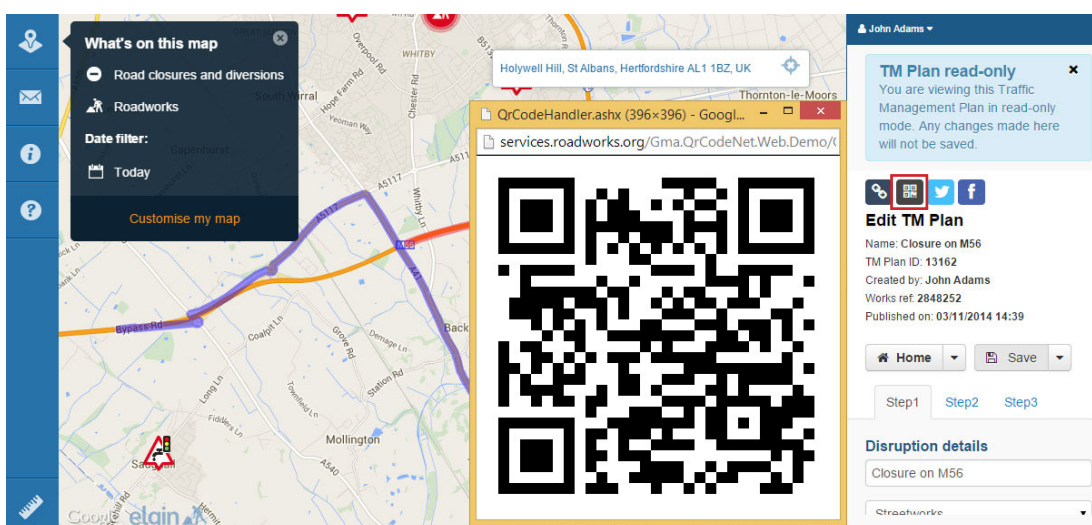
section three

- The sharing icons are functional in the read-only view, meaning users can share the plan without risk of editing it. When the Twitter icon is ticked, a popup box appears with pre-populated information, including the location of the closure and a link to it on roadworks.org. Users can edit this information and tweet it from the organisation's Twitter account.



Sharing on Facebook works in a similar way to sharing on Twitter.

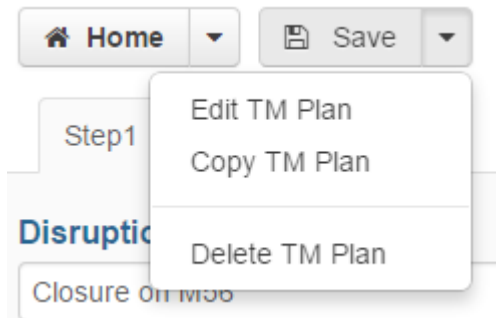
- Clicking the QR icon will open a new window containing a QR code. Print this code and stick it on road works signage so pedestrians can use their phones and other mobile devices to find more information about road works.



section three

Copying Plans

- To edit, copy or delete a Traffic Management Plan, click the arrow next to 'Save' and those options now appear. These options are also available right from the 'Search & edit' menu.



- To copy a Traffic Management Plan, click 'Copy TM Plan'. A copy of that plan will open, which is now renamed with '- Copy' appended to it.

TM Plan copy
✕

This is a copy of an existing Traffic Management Plan. Any changes made here will be saved as a new TM Plan when you click save.

Note: Any date related template tags in documents will need to be manually updated.

Create new TM Plan

Works ref.

Home

Save

Step1

Step2

Step3

Disruption details

Closure on M56 - Copy

Streetworks

Rename the new Traffic Management Plan so it can be easily identified from the original. Make any other required changes, such as date changes, and click 'Save'.

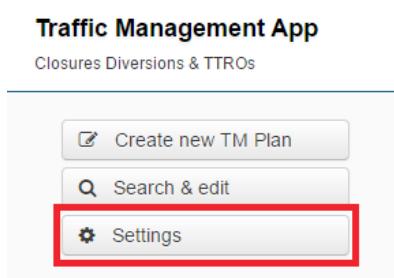
section three

Settings

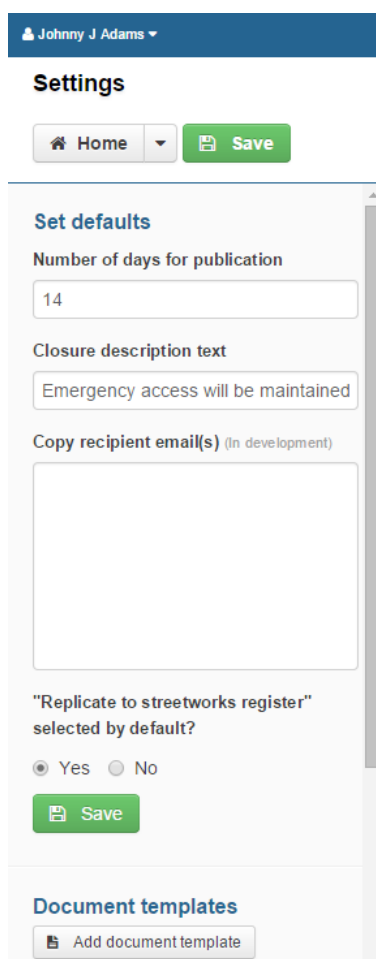
Setting Defaults

Within the Traffic Management App users can assign default settings, making it even quicker and easier for to create Traffic Management Plans.

- Click 'Settings' from the main menu.

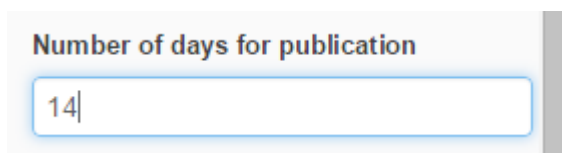


A menu will appear with various settings options.



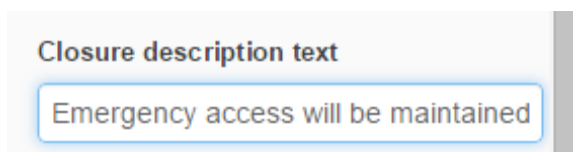
section three

- The first field that appears in the settings menu is 'Number of days for publication'. The number in this field represents the default number of days from the start of a Traffic Management Plan that it will be published. This functionality is recommended for use rather than publishing all Traffic Management Plans immediately to avoid cluttering the map when a roadworks.org user views plans over a broad date range.



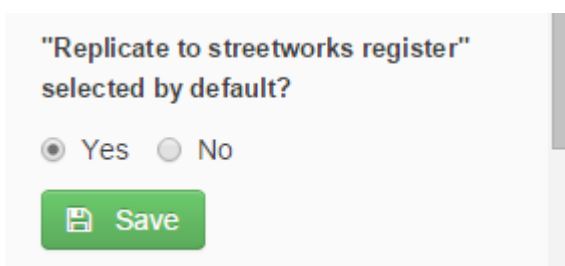
Number of days for publication

- The closure description text is the default text that will appear in information boxes for traffic management types, such as closures and diversions, on roadworks.org. Users can overwrite this information when creating traffic management plans.




Closure description text

- Users can choose to replicate Traffic Management Plans to the streetworks register by default by selecting the appropriate radio button. This default option can be changed on an individual basis when creating traffic management types.



"Replicate to streetworks register" selected by default?

☒ Yes ☐ No

 Save

Please note: To set up the replication to register functionality, please contact Elgin by email on info@elgin.org.uk or by phone on 0207 127 6955 to request the ETOn replication to register configuration form.

section three

- Click the 'Save' button to save any changes made in the 'Set defaults' section of the 'Settings' menu.

Set defaults


Number of days for publication

Closure description text

Copy recipient email(s) (In development)

"Replicate to streetworks register" selected by default?

☒ Yes
 ☐ No

 Save

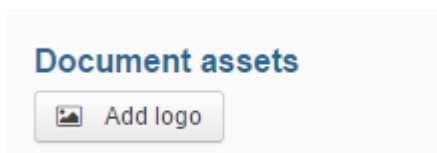
section three

Creating Document Templates

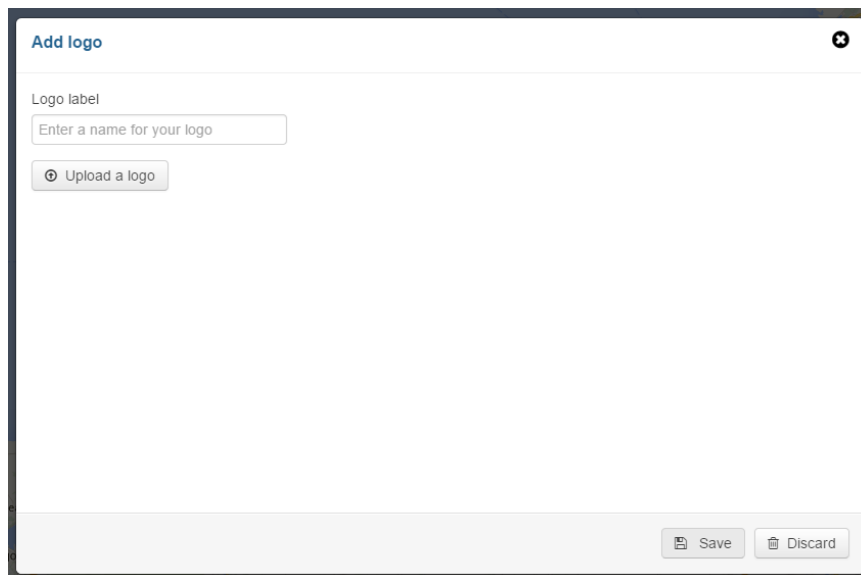
The Traffic Management App allows users to create templates for regularly used document types, such as Traffic Orders, Advertising Notices and TTRNs, and automatically generate documents based on these templates.

Adding Logos

- Before adding a template, a logo needs to be added. (Ensure the logo is a suitable pixel size before uploading it.) Scroll down to 'Document assets' and click 'Add logo'.

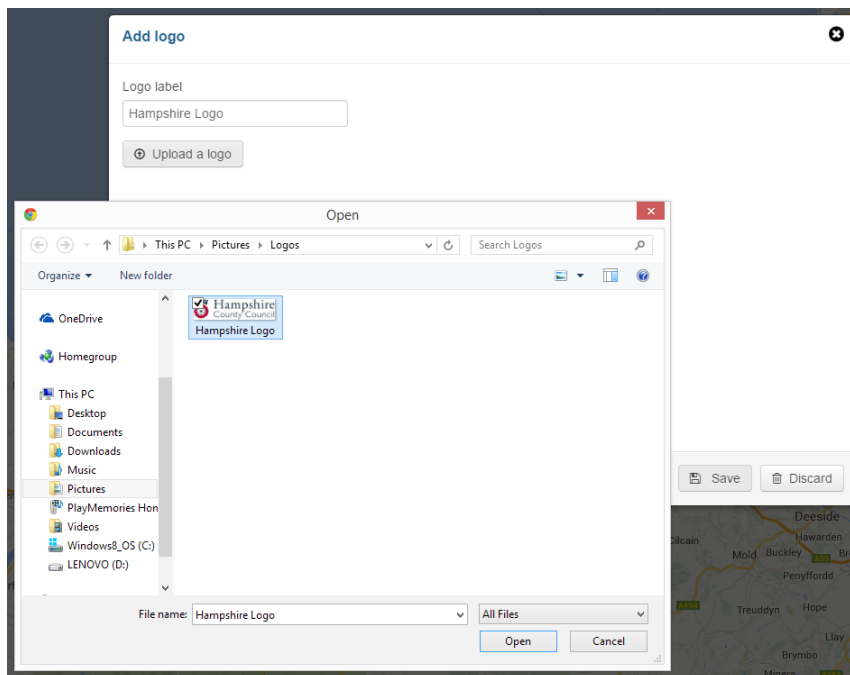


- A box will appear on the screen. Give the logo a label. Then click 'Upload a logo'.

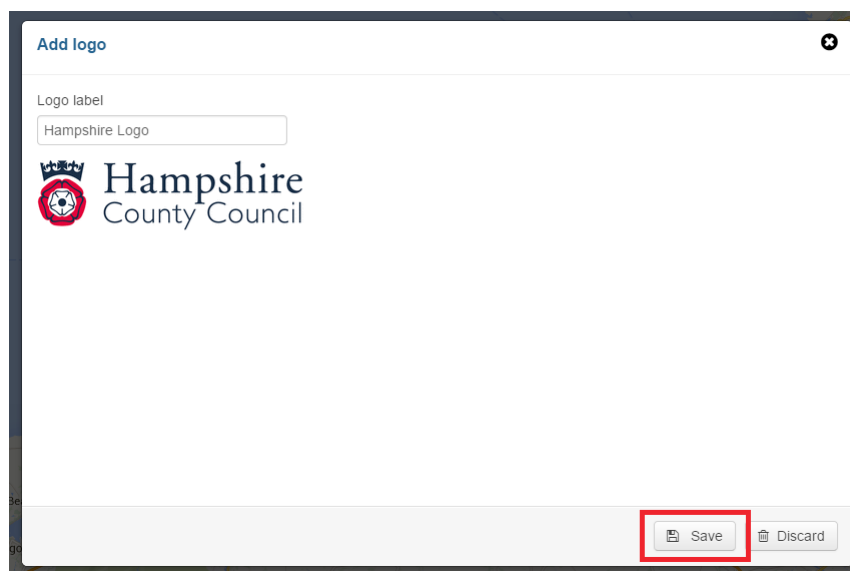


section three

- A window will appear, allowing users to explore the contents of their computer. Locate the logo you wish to upload, select it and click open.



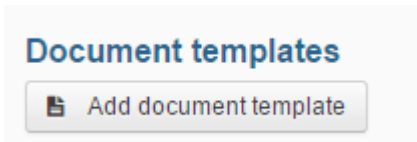
- A preview of the logo will appear below the label. Click 'Save'. The logo will now appear listed under the 'Add logo' button. Users can add more than one logo for use in different documents.



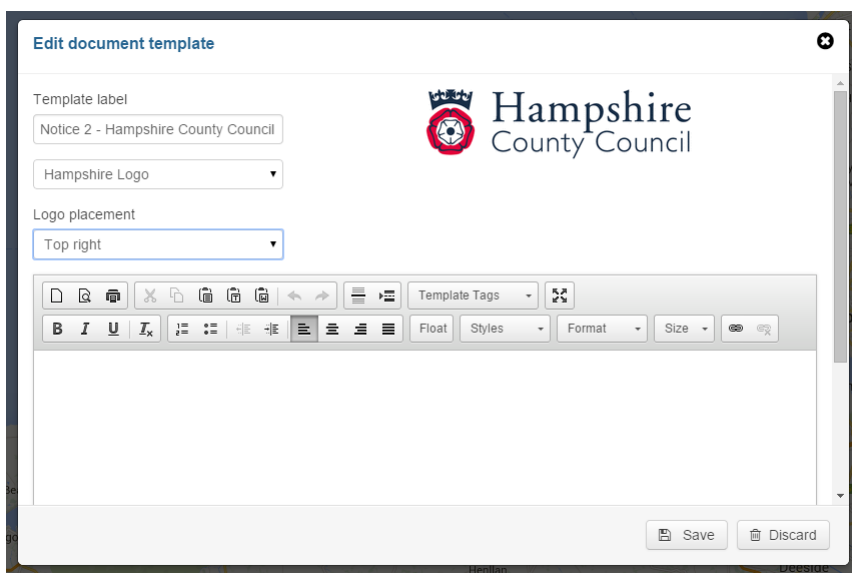
section three

Basic Functionality

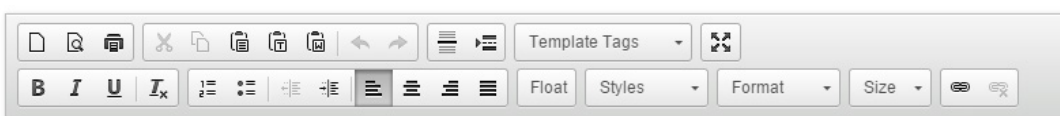
- Navigate to 'Document templates' and click 'Add document template'.



- An editor will open, much like the one seen earlier in this guide when adding a document to a Traffic Management Plan. Name the document in the Template label field. Select the logo to be included in this document and choose a placement for it. From this the option to save your template becomes available. Users can come back and edit it at a later time.



- Tools and formatting options can be seen along the top of the text editor, much like those in other common word processors. These options are, from the top left, start a new page; preview the document; print the document; cut and copy text; paste regular, as plain text or retain supported formatting from a word processor; undo the last action or redo; insert horizontal line or page break; insert a template tag, (which will be demonstrated later; make the editor full screen; make text bold, italicised, highlighted or remove formatting; add a numbered or bulleted list, change indentation or alignment; float text, choose highlighting styles, text type, text size; and insert or remove a hyperlink.

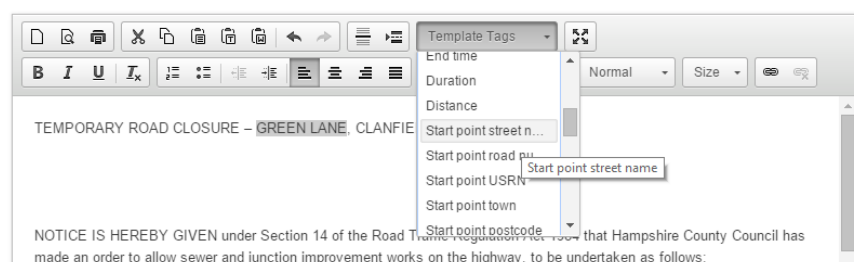


section three

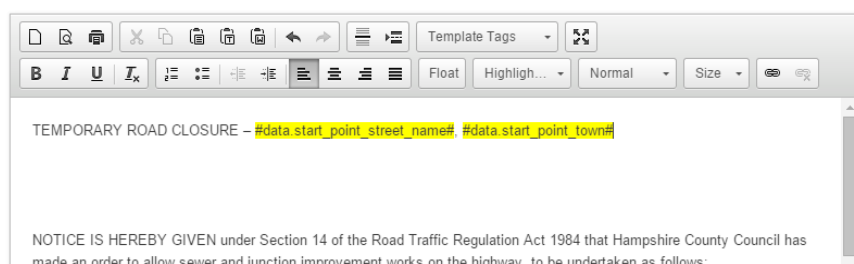
Template Tags

- Template tags are pieces of information that are drawn from the Traffic Management Plans. In the template, create static text that will be uniform from document to document but insert template tags as information needs to be inserted from Traffic Management Plans.

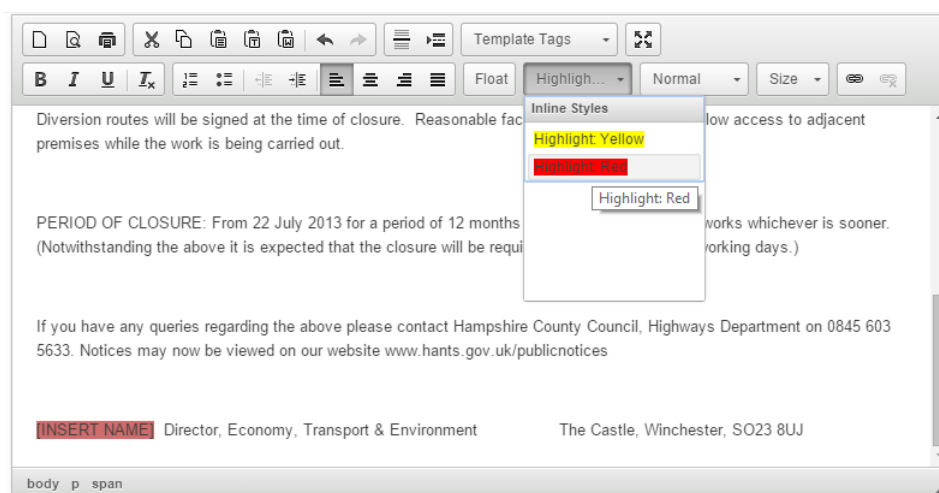
Tip: Paste an existing document as plain text, highlight information that needs to change from document to document, then select the correct template tags.



Template tags appear as yellow highlighted text.



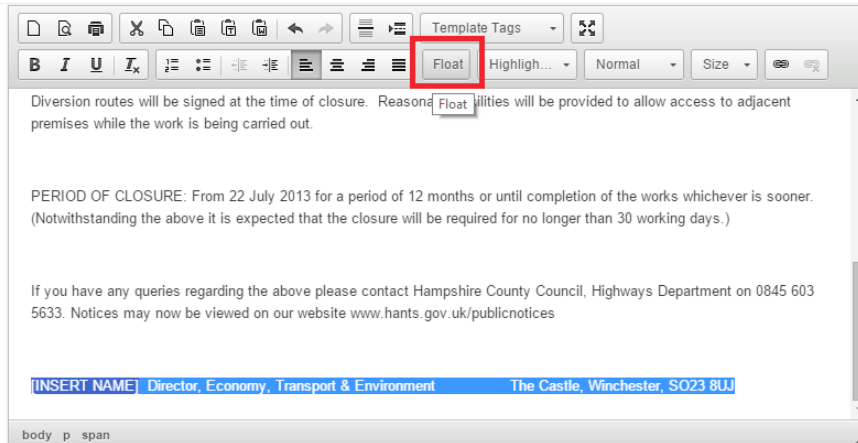
- If there is any information that needs to be inserted each time this template is used to create a document but cannot be drawn from a Traffic Management Plan, highlight it in red to draw the user's attention to it.



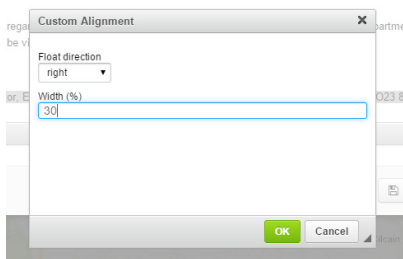
section three

Floating Text

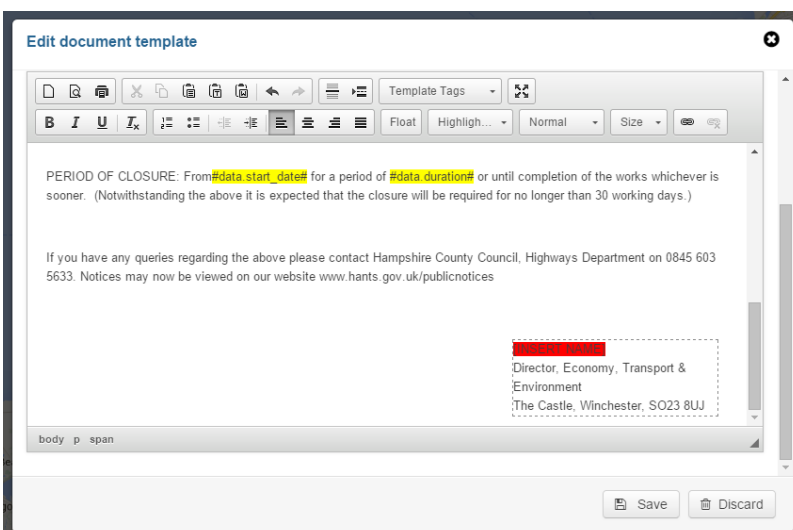
- Floating text is used to create text boxes so that text can appear in columns side by side. Highlight some text and click 'Float'.



- Select the Float direction and define the width of the page for which the text should float.



Once the box is created, users can edit the text within or add more. Hold down 'Shift' + 'Enter' when moving text to the next line.



- Click 'Save' to save the template. It is now listed under the 'Add document template' button, where it can be edited or deleted.

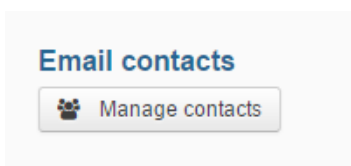
section three

Email Contacts & Templates

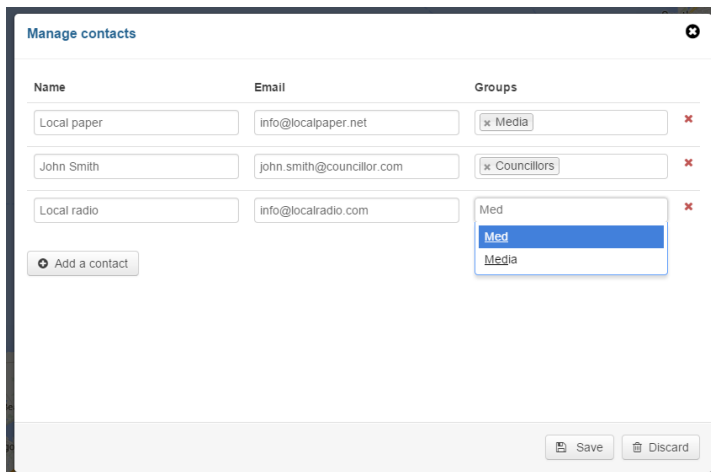
Email Contacts & Groups

Users can create email contacts and groups so they can easily email interested parties from Step 3 Traffic Management Plans created using the Traffic Management App.

- From the Settings menu, scroll to 'Email contacts' and click 'Manage contacts'.



- A box will appear with fields in three columns: Name, Email and Groups. Create contacts by clicking 'Add a contact', then adding their name, email address and relevant group name in the 'Groups' box.



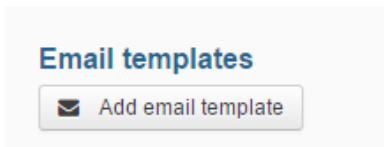
As users type, names of existing groups will be suggested. To create a new group, simply type a name for the group and press return.

- When the contacts have been added, click 'Save'. Additional contacts or groups can be added later.

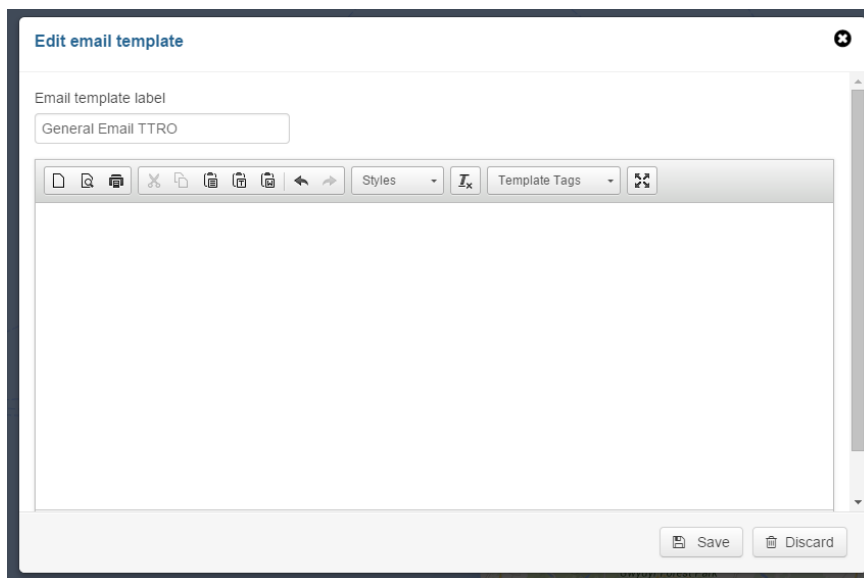
section three

Email Templates

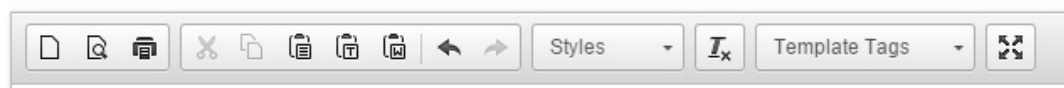
- Users can create email templates by clicking 'Add email template' under 'Email templates'.



- An editor will appear that looks similar to the document editor above but more simple. Name the template in the field under 'Email template label'.

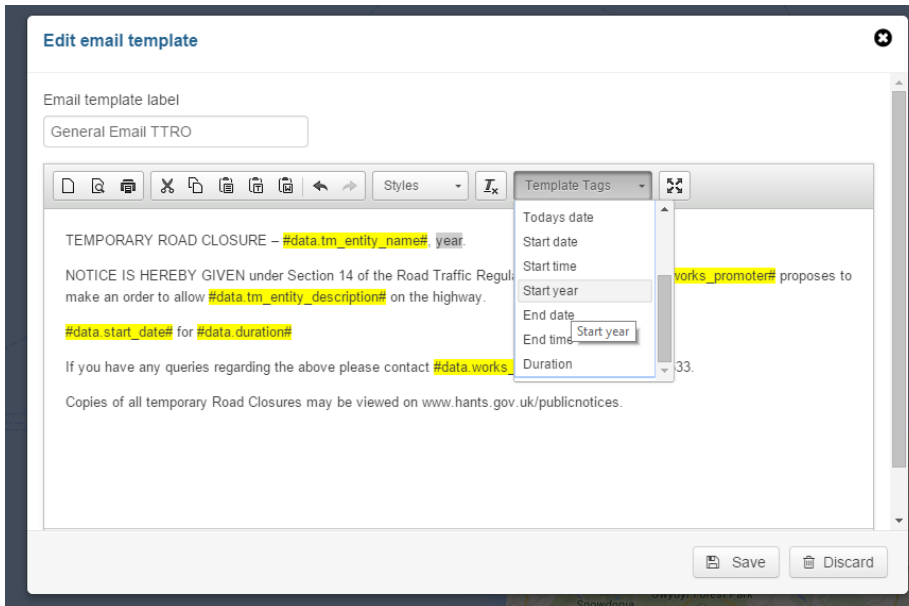


- The editing tools are more simple than those for the document template editor. They are, from the left, start a new page; preview the email; print the email; cut and copy text; paste regular, as plain text or retain supported formatting from common word processors; undo the last action or redo; choose highlighting styles; remove formatting; insert a template tag; or make the editor full screen.

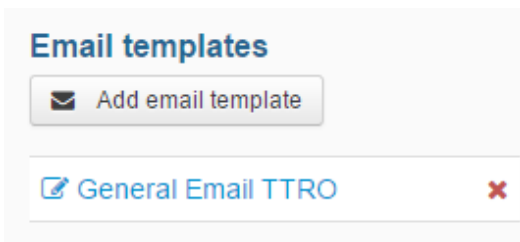


section three

- Template tags are pieces of information that are drawn from the Traffic Management Plans. In the template, create static text that will be uniform from document to document but insert template tags as information needs to be inserted from Traffic Management Plans.



- Click 'Save' to save the email template. It can now be seen listed under the 'Add email template' button, where it can be edited or deleted.



section four

More information

If you would like any further training or information about the Traffic Management App, or you would like to subscribe, please contact Elgin by email at info@elgin.org.uk or by phone on 0207 127 6955.

We continually develop the Traffic Management App to ensure it is as streamlined and useful as possible. To stay up to date with new features and enhancements, visit our release updates blog at support.roadworks.org. There is also a change-log accessible from the bottom of the main menu within the Traffic Management App. This contains a brief summary of the same information that can be found at the updates blog.

ELGIN

John Carpenter House

John Carpenter Street

London

EC4Y 0AN

e: info@elgin.org.uk

t: 0207 127 6955