

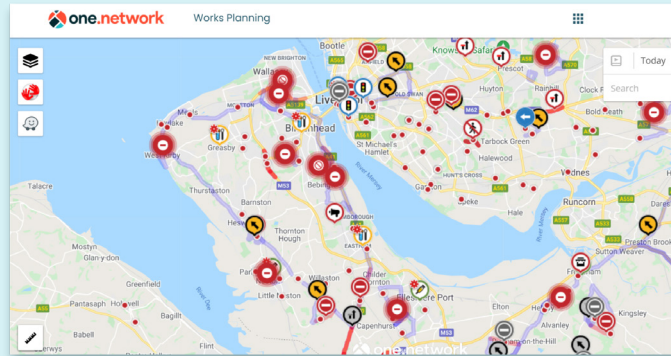
one.network: Works Planning

Our map-based Works Planning module helps users reduce aborted works and other planning failures.



Reduce the cost of failure with rapid risk assessment

Works Planning brings together crucial planning datasets under one roof, empowering planning teams to digitally and rapidly risk assess work sites from one easy-to-use dashboard, helping identify issues with viability, cost, timing and safety.



Works Planning dashboard displaying planning data.

Interested in a test drive?

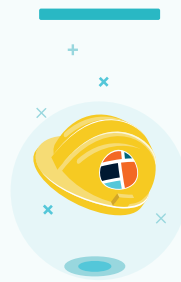
[Get in touch](#)

Identify, monitor and mitigate congestion



Minimise aborted works

Assess work sites virtually in advance to avoid re-planning and minimise the volume of aborted works.



Mitigate health & safety risks

Reduce time spent onsite and mitigate health and safety risks by performing digital, desktop risk assessments.



Protect your reputation

Avoid clashes with school runs, hospital access, emergency vehicle routes and more to minimise disruption caused by your works.

Plan, communicate and analyse every road event

Requirements:

- Part of our Planning and Coordination package.
- Requires a subscription to either our Essentials or Professional package.

one.network: Works Planning

Our map-based Works Planning module helps users reduce aborted works and other planning failures



How it helps

Works Planning is a map-based desktop risk-assessment tool, underpinned by OS MasterMap which brings together crucial planning datasets under one roof.

With Works Planning, users can:

- **Minimise** aborted works, re-plans and overruns by assessing work sites virtually in advance.
- **Save** time conducting physical, in-person risk assessments while still ensuring worker safety by performing risk assessments digitally, allowing you to equip workers with the resources and materials they need in advance.
- **Protect** your reputation by avoiding clashes with school runs, hospital access, emergency vehicle routes and more to minimise disruption caused by your works.
- **Standardise** planning processes with a clearer planning procedure across teams using our simple planning and risk assessment dashboard.

Features

- Map-based desktop risk-assessment tool underpinned by OS MasterMap.
- Crucial planning datasets including:
 - Built environment such as bus stops, bridges, structures and height, weight and width restrictions.
 - Compliance information including Section 58s, the NSG and speed limit data.
 - Proximity factors, for example, schools, hospitals and fire stations.
- Optional Works Planning Data API.

Plan, communicate and analyse every road event

Requirements:

- Part of our Planning and Coordination package.
- Requires a subscription to either our Essentials or Professional package.