

roadworks.org

User Guide

content

section one

| | |
|-------------------------|---|
| Search and Navigation | 2 |
| Cookies | 2 |
| Customise my map | 2 |
| What's on this map | 3 |
| Where do you want to go | 3 |
| Navigation tools | 3 |

| | |
|------------------------------|----|
| Map Layers | 5 |
| Live incidents | 6 |
| Live traffic congestion | 6 |
| Road closures and diversions | 6 |
| Traffic restrictions | 7 |
| Date range | 7 |
| Roadworks | 8 |
| Driver information | 9 |
| Public events | 10 |
| Public transport | 10 |
| Base maps | 11 |
| Operational info | 11 |

section two

| | |
|--------------|----|
| Email Alerts | 13 |
|--------------|----|

section three

| | |
|----------------------|----|
| Advanced Search | 15 |
| Access functionality | 15 |
| Search | 15 |

section four

| | |
|------------------|----|
| More information | 21 |
|------------------|----|

section one

Search & Navigation

- Head to roadworks.org in your web browser.

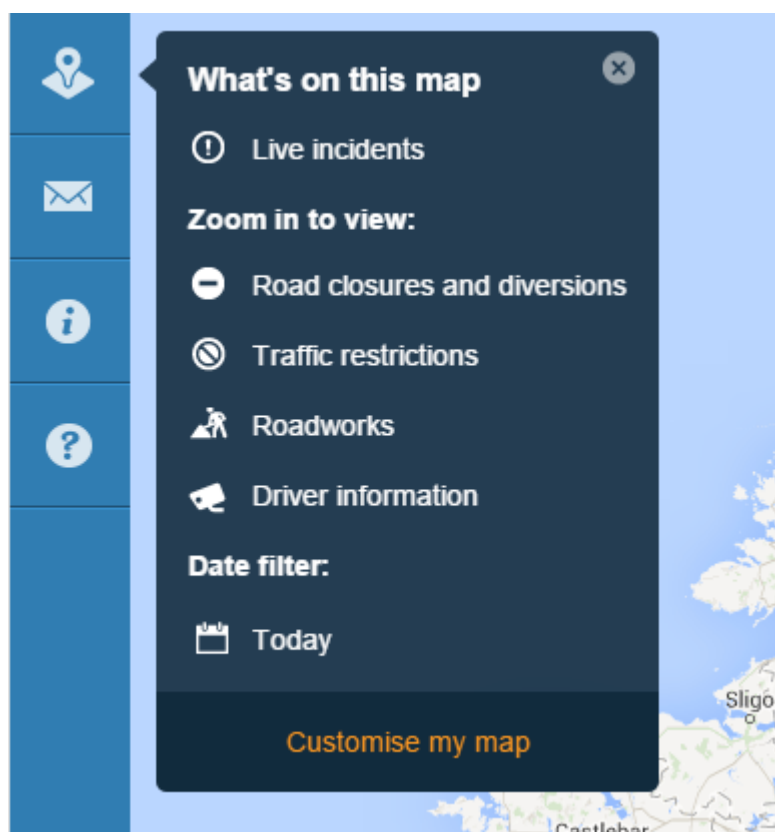
Cookies

- You will see a cookie warning message at the top of the page when you first visit roadworks.org. roadworks.org stores cookies web browsers so users have a more personalised experience. Cookies allow roadworks.org to remember things about a session, such as which map layers were last activated and what location was last viewed, so users can pick up where they left off last time.

Cookies on Roadworks.org We use cookies from our websites to bring you services and to ensure we give you the best experience on our website. By using this website, you consent the use of cookies. [Find out more](#)

Customise my map

- You will see a box at the top left of the map with the heading **What's on this map**. The information within this box will updated as you activate and deactivate different layers. You can change the active layers by clicking **Customise my map**.



section one

Search & Navigation

What's on this map

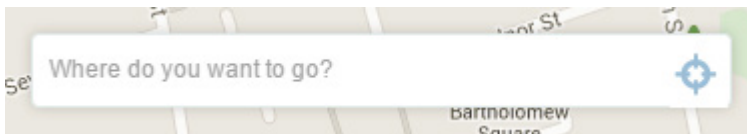
- Clicking the x in the top right of the **What's on this map** box will close it, giving the user greater visibility of the map. The box will be replaced by an eye icon, which will bring the box back into view when clicked.



- By default, the **Road closures and diversions, Traffic Restrictions, Roadworks and Driver information** map layers are active, displaying results that are active or commencing today, **Live incidents** are also active by default.

Where do you want to go?

- You can find a location by entering a street name, parish, ward, district or local authority in the **Where do you want to go?** box. You can also search by USRN or works reference number.



- The crosshair icon to the right of the **Where do you want to go?** box will zoom the map to your current location. This feature is not available in Internet Explorer 8.

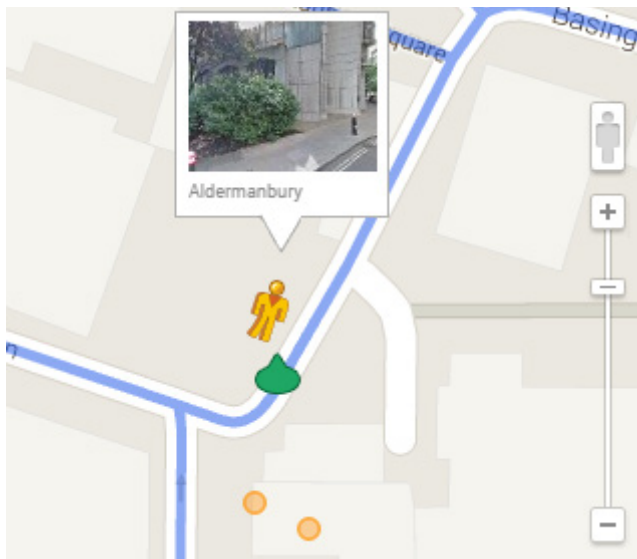
Navigation tools

- You will see navigational tools on the bottom right of the map.



section one

- Use the plus and minus buttons to zoom in and out of the map, or drag the marker up or down the bar. You can also double click on the map to zoom to that location.
- Click and hold the yellow figure, then drag and drop it onto the map to enter street view.



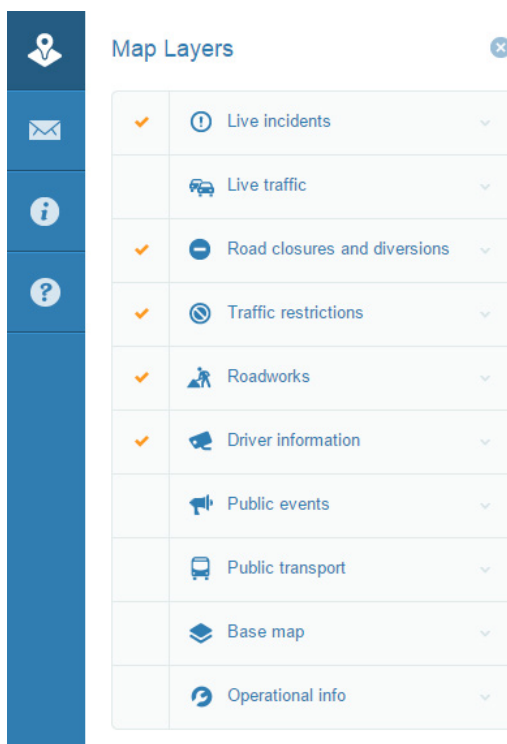
- You can navigate street view by clicking on the arrows or by clicking and holding any part of the screen and dragging to the desired view. Click the x at the top right of the screen to return to the normal roadworks.org view.



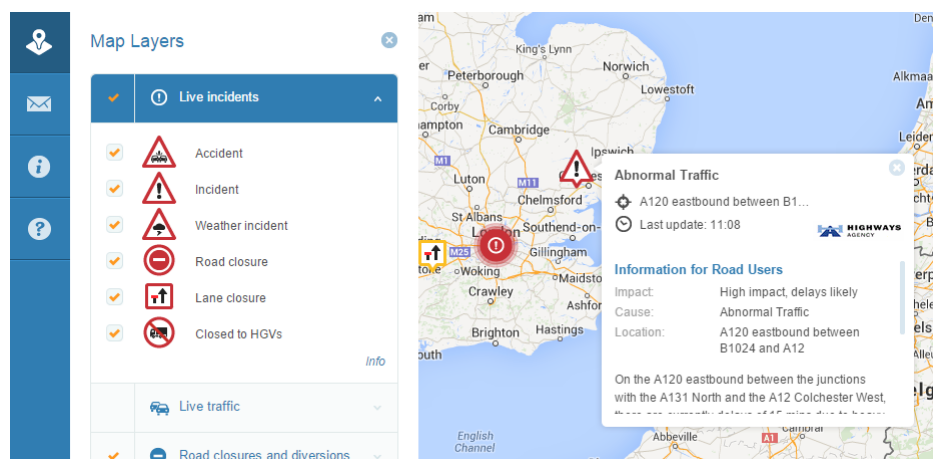
section one

Map Layers

- The top icon on the left menu will expand the **Map Layers** options. You can also access these options by clicking on **Customise my map** in the **What's on this map?** box. There are ten tabs in the Map Layers menu: **Live incidents**, **Live traffic**, **Road closures and diversions**, **Traffic restrictions**, **Roadworks**, **Driver information**, **Public events**, **Public transport**, **Base map** and **Operational info**.



- Click on the arrow to the right of each tab to see which layers within can be activated or deactivated. A layer is activated when there is a tick in the box. Some layers are only visible at certain levels of zoom.



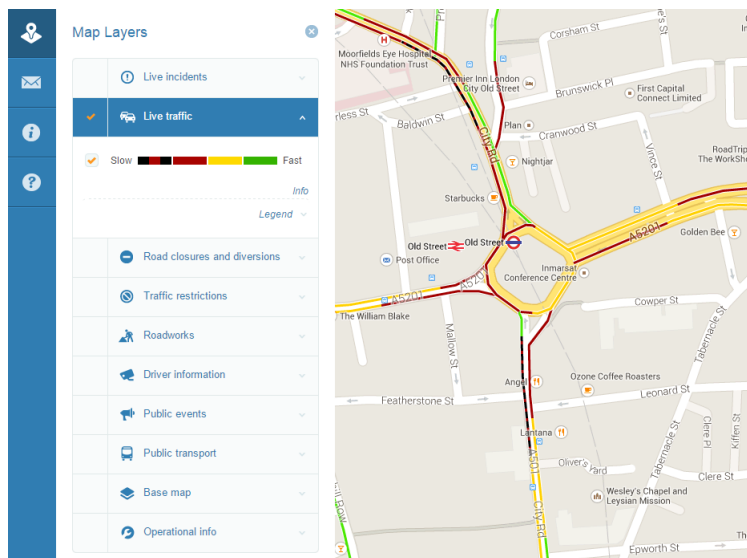
section one

Live incidents

- Live incidents will be visible on the map at any level of zoom. Clicking on a live incident will reveal a box containing information about that incident, for example, a description, the data source and its traffic impact.

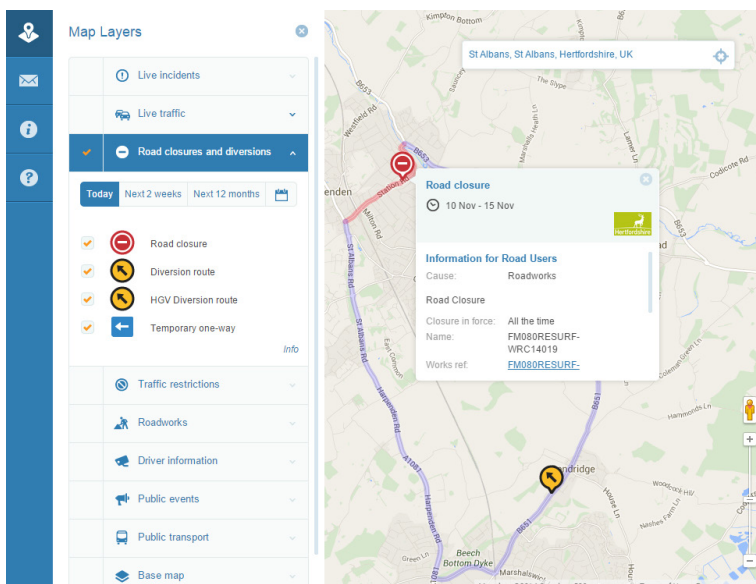
Live traffic congestion

- The Live traffic congestion layer will reveal the current speed of traffic, where that information is available.



Road closures and diversions

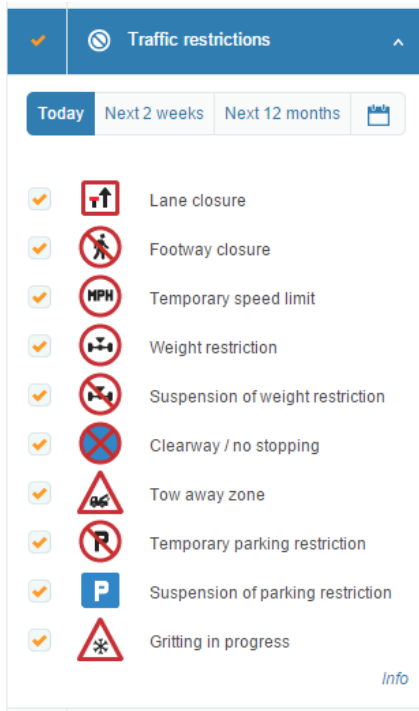
- Road closures and diversions layers will present as lines along affected roads, accompanied by icons. Lines are only visible at certain levels of zoom, depending on their length. Clicking on these lines or icons will reveal detailed information about the closures and diversions, such as times in force, a description of the disruption, diversion directions, and attached documents.



section one

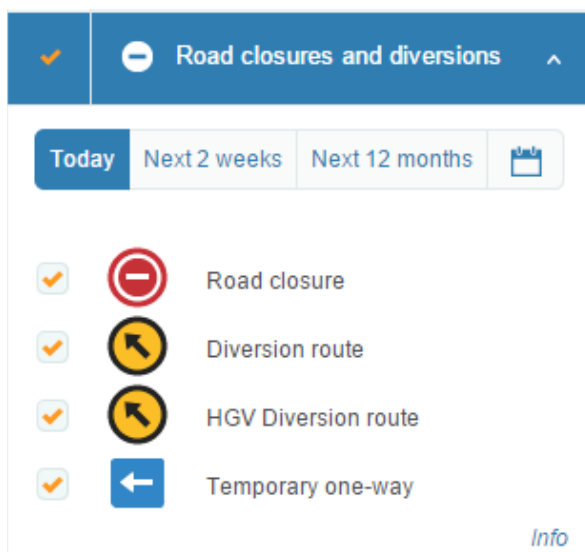
Traffic restrictions

- Traffic restrictions will appear on roadworks.org in the same way as Road closures and diversion.



Date range

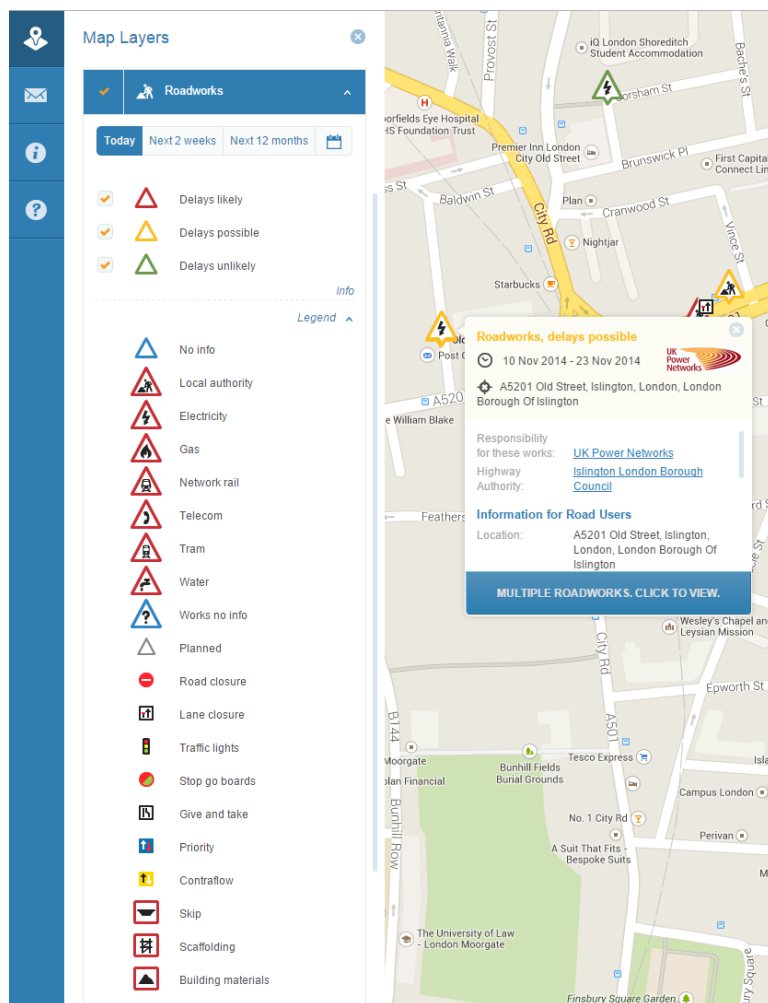
- You can toggle to date range for the **Road closures and diversions** and **Roadworks** layers by clicking **Today**, **Next two weeks**, **Next 12 months** or by selecting a custom date range. **Road closures and diversions** and **Roadworks** that are active or commence during the range you choose will appear on the map.



section one

Roadworks

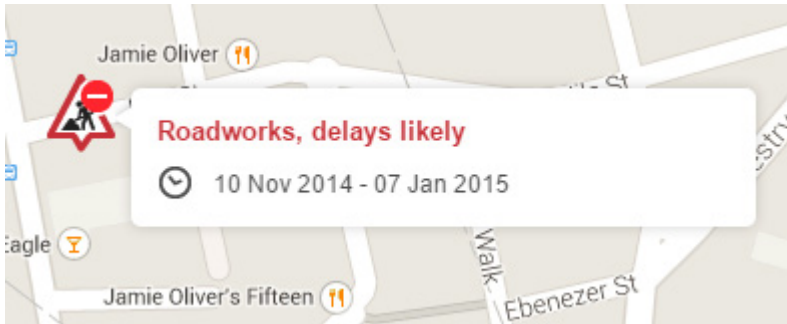
- Roadworks will present as icons in a similar fashion to how Live incidents do. The colour of the icon is determined by the impact it is expected to have on traffic. The picture within the icon shows what kind of work it is.



Clicking an icon will reveal a box containing information about that work, for example, who is responsible for the works, within which highway authority it falls, a location, a description, permit status, if there are traffic lights present and a works reference number.

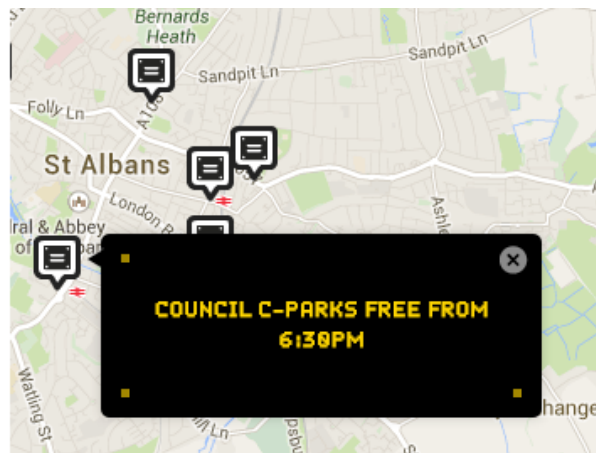
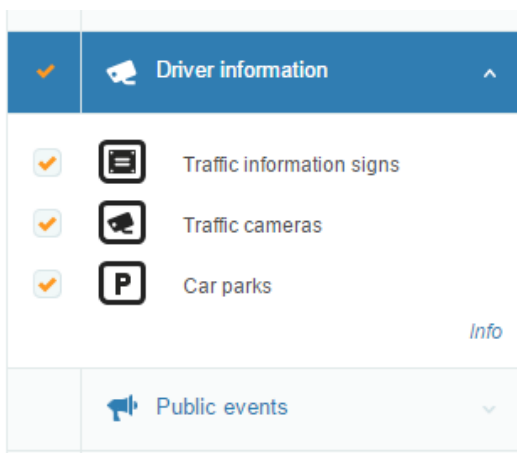
section one

- You can get limited information about a work by hovering over its icon. If you hover for a few seconds, the icon becomes an information box, as seen above.



Driver Information

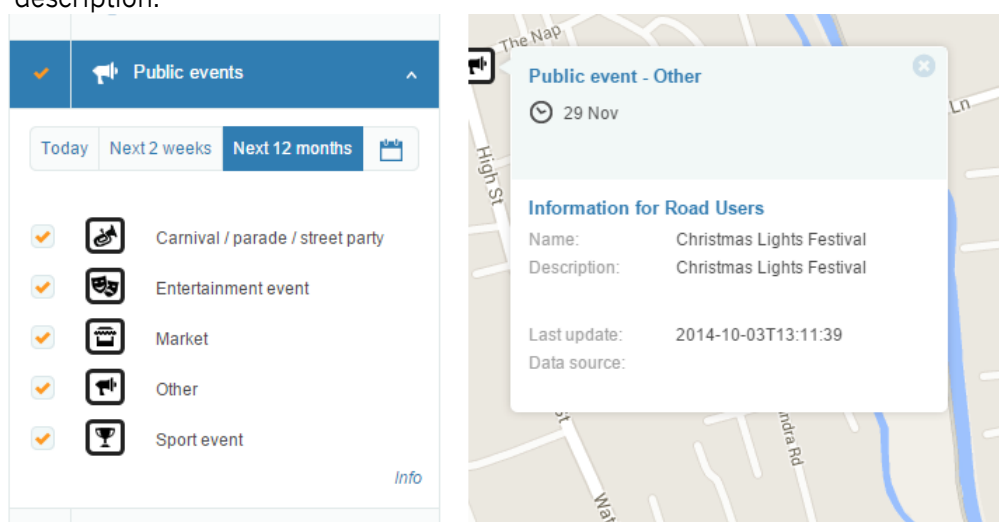
- Driver information layers include Traffic information signs, Traffic cameras and Car parks. Activate these layers by checking the box next to them. Clicking on the icons that appear on the map will reveal more information about these items. The information boxes that appear for Traffic information signs are black with yellow text, as you would see on a live traffic information sign on the road.



section one

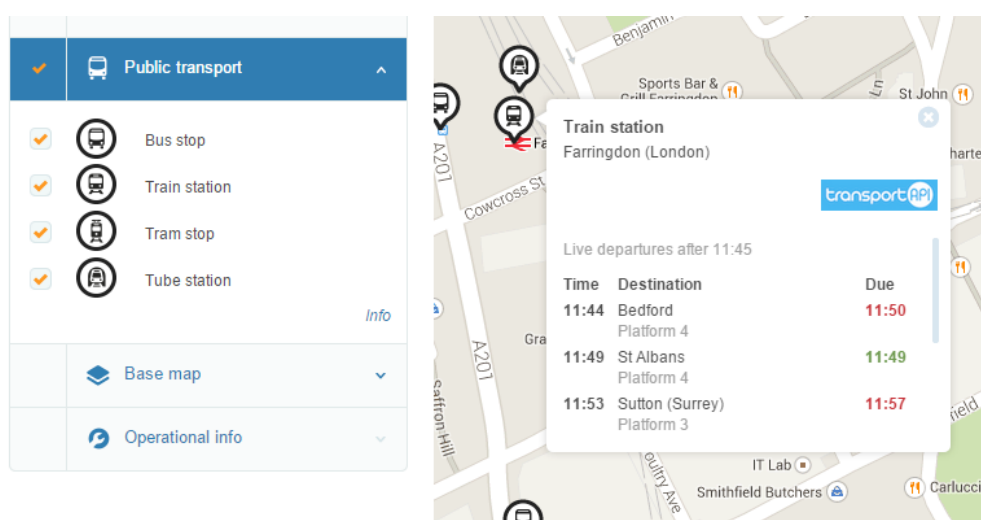
Public events

- The Public events tab contains layers for traffic disruptions, such as Carnival/parade/street party, Entertainment event, Market, Other, Sport event. Clicking on the icons that appear when these layers are activated will reveal detailed information about the events, such as the time they are active and a description.



Public transport

- Activating layers within the Public transport tab will reveal the locations of bus stops, train stations, tram stops and tube stations. (Please note that public transport information is unsupported beta functionality.)

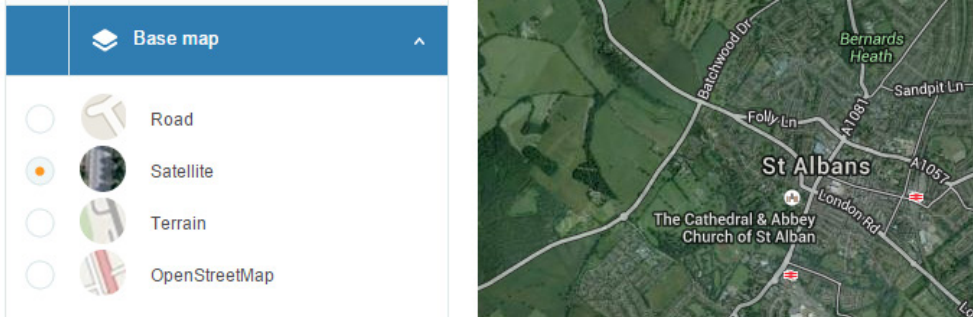


- Clicking on the icon for a stop or station will reveal real time information (when available) about the next services due to depart from that stop or station. The colour of the time will indicate if that service is on time, late or timetabled information only.

section one

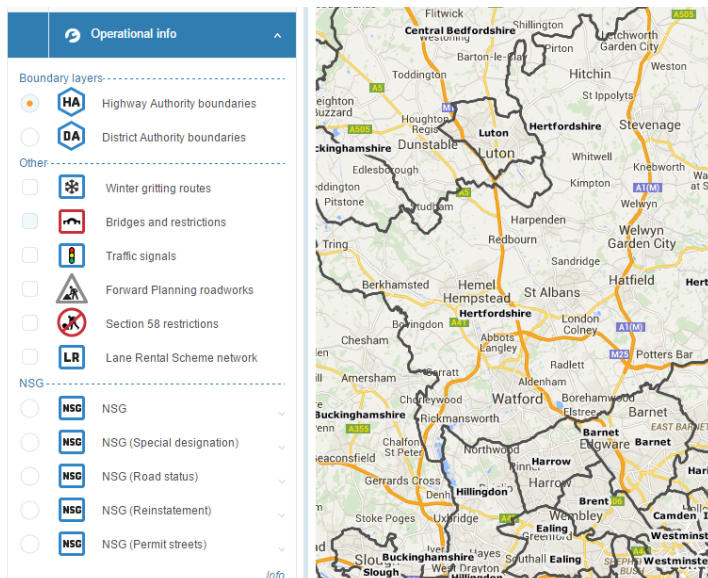
Base maps

- You can toggle the base map between Roads, Satellite, Terrain or OSM (Open Street Map) from within the Base map.



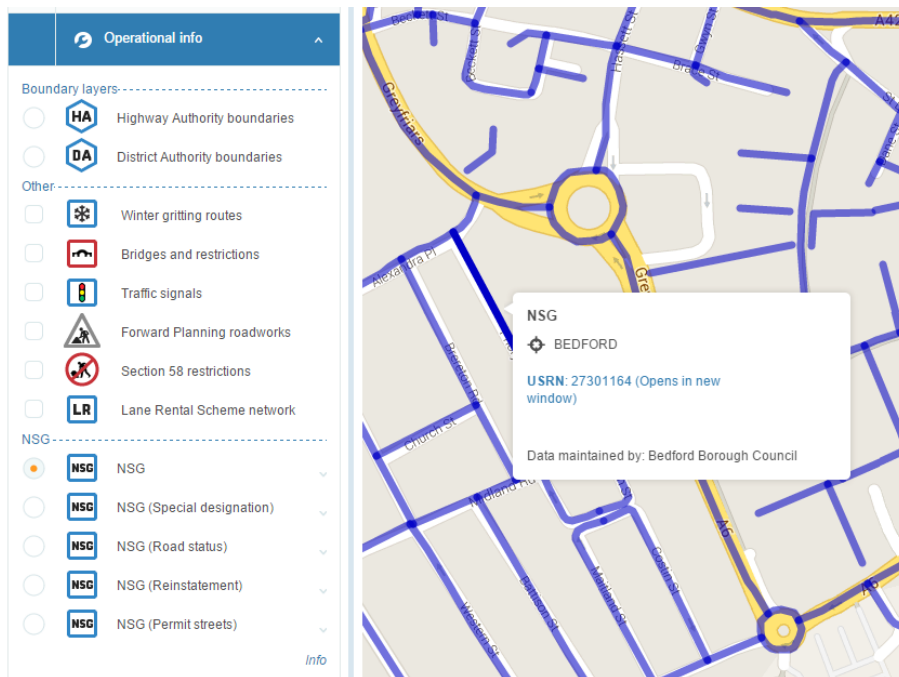
Operational info

- The Operational info tab contains many operational use layers. Please note that not all of these layers are available in all areas.
- Operational info layers include Highway and District Authority boundaries; Winter gritting routes, Bridges and restrictions, Traffic signals, Forward planning roadworks, section 58 restrictions and Lane Rental Scheme network; and NSG layers



section one

- Activate any of these layers by checking the box or radio button next to them in the list. When any of the NSG layers are active, clicking on the line that appears will reveal the USRN and road name for that road.



- Clicking on the line will reveal more comprehensive information in a new tab.

USRN Detail: 27301164 - Priory Street, Bedford

Close window

Street details

| USRN | Record Type | Road No. | Street | Locality | Town | County | Unofficial name | Version | Entry date |
|----------|-------------|----------|---------------|----------|---------|---------|-----------------|---------|------------|
| 27301164 | 1 | - | Priory Street | - | Bedford | Bedford | - | 1 | 02-Jan-96 |

Special Designation

| Special Designation | Description | Street location | From | To | Periodicity | Start date | End date | Start time | End time | Source |
|----------------------|-------------|-----------------|------|----|-------------|------------|----------|------------|----------|--------|
| No details available | | | | | | | | | | |

Reinstatement Designation

| Reinstatement Designation | Street location | From | To | Source |
|--------------------------------------|-----------------|------|----|-------------------------|
| 1 Carriageway Type 4 - Up to 0.5 Msa | | | | Bedford Borough Council |

Road Status

| Road status | Street location | From | To | Source |
|-------------------------|-----------------|------|----|-------------------------|
| 1 Publicly maintainable | | | | Bedford Borough Council |


Permits

| Maintained by | Whole road | From | To | Source |
|--|------------|------|----|-------------------------|
| 1 BEDFORD BOROUGH COUNCIL - HIGHWAYS [18001] | Yes | | | Bedford Borough Council |

NSG Metadata

swa_org_ref: 235
 Level: 3
 Publication date: 29-Aug-2014
 Loaded in file: 15-Sep-2014

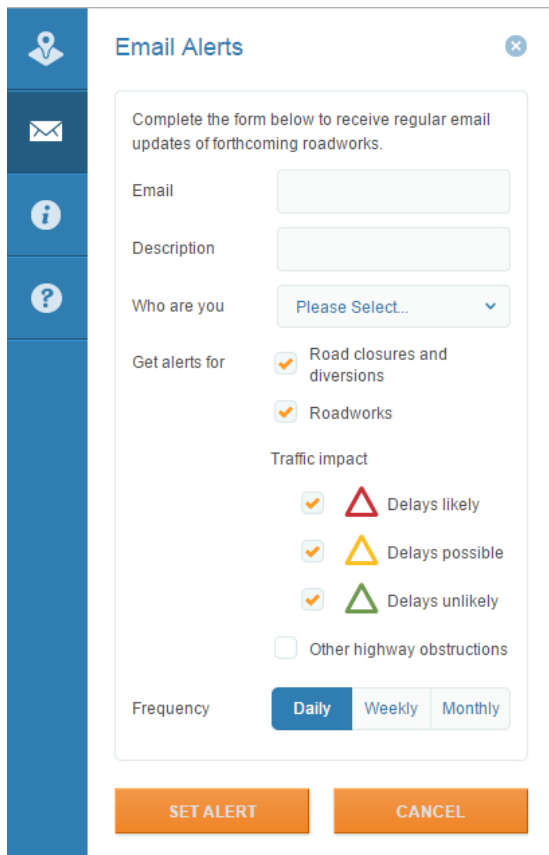
National Street Gazetteer data provided by participating highway authorities via the NSG Hub maintained and supported by [Geosig](#). National Street Gazetteer data contains [Ordnance Survey](#) data and database rights © Crown copyright.
 The contents of this website are for information only. Whilst every care has been taken in the compilation of the information, ELGIN disclaims any warranty or representation, express or implied about its content, accuracy, completeness or appropriateness for a particular purpose. For queries regarding the data please contact the relevant highway authority. The highway authority is displayed when you click on a map feature.


www.elgin.org.uk

section two

Email Alerts

- roadworks.org allows you to create a regular email alert with information about works within your map view. To set an email alert for the map area you are currently viewing, select the envelope icon from the left menu.

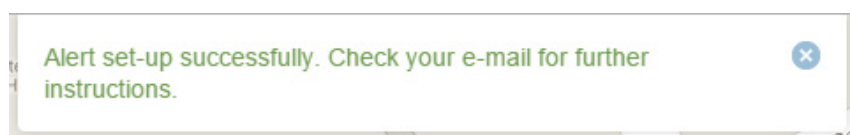


The screenshot shows the 'Email Alerts' form. On the left is a blue sidebar with icons for location, email, information, and help. The form itself has a title 'Email Alerts' and a close button. Below the title is a instruction: 'Complete the form below to receive regular email updates of forthcoming roadworks.' The form fields include: 'Email' (text input), 'Description' (text input), 'Who are you' (dropdown menu with 'Please Select...' and a downward arrow), 'Get alerts for' (checkboxes for 'Road closures and diversions' and 'Roadworks', both checked), 'Traffic impact' (checkboxes for 'Delays likely' (with a red triangle icon), 'Delays possible' (with a yellow triangle icon), 'Delays unlikely' (with a green triangle icon), and 'Other highway obstructions' (unchecked)), and 'Frequency' (radio buttons for 'Daily' (selected), 'Weekly', and 'Monthly'). At the bottom are two orange buttons: 'SET ALERT' and 'CANCEL'.

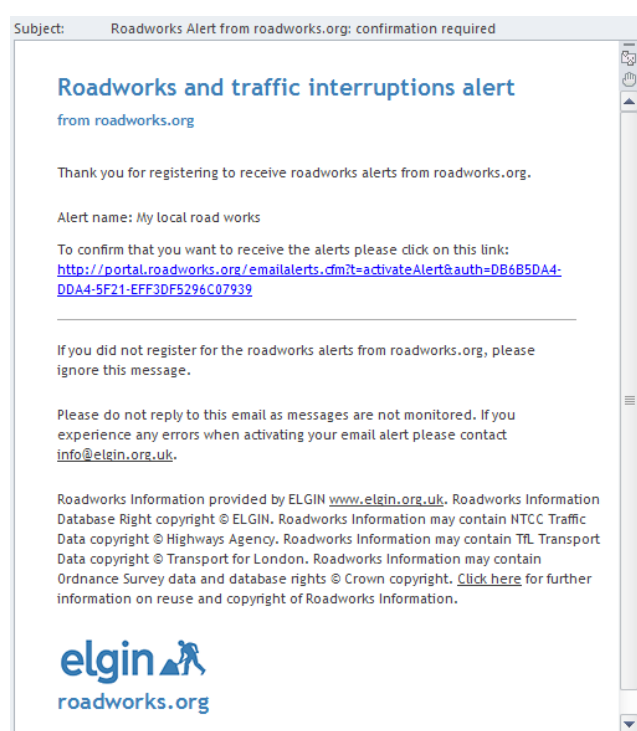
To set the alert, enter your email address and a description of the alert (which is useful if you would like to set multiple alerts); select the best option from the drop down menu next to Who are you? (this is for ELGIN's information and allows us to improve our services by identifying who is using the email alerts function); choose what information you would like included in the alerts next to Get alerts for; and choose how often you would like to receive the alert.

section two

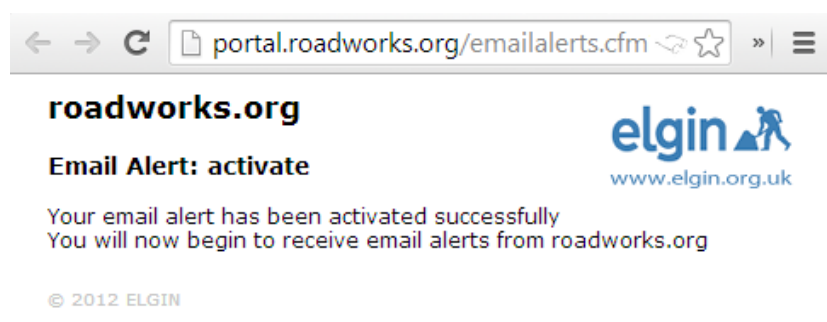
- Click Set alert. You will then see a dialogue box explaining that you will receive a confirmation email to the specified address containing instructions.



- Click on the link contained within the email to confirm that you would like to begin receiving email alerts.



- You will be redirected to a confirmation page. Your email alert is now active.

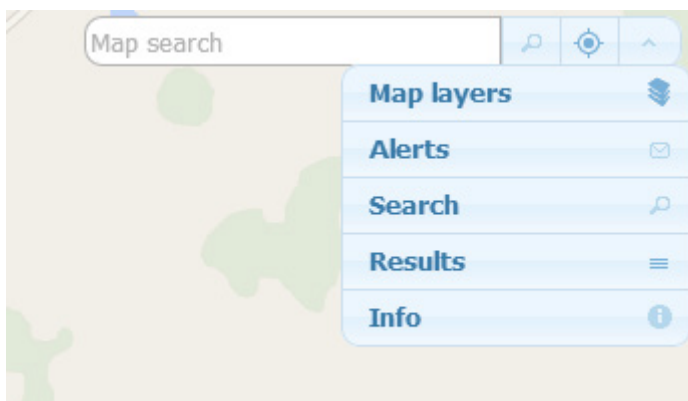


section three

Advanced search

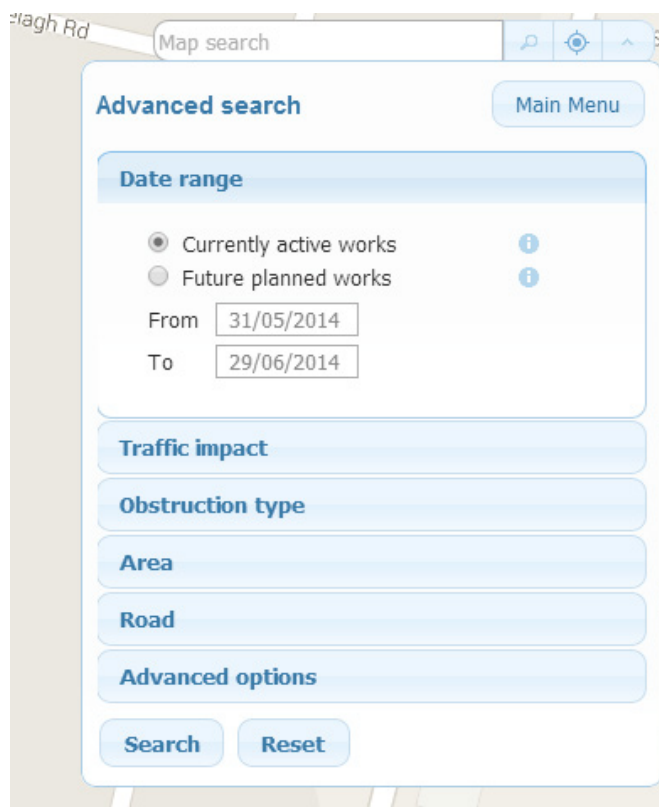
To access the below functionality, head to v6.roadworks.org

- You can access more functionality in roadworks.org beyond the basic search and map layer selection by clicking Alerts and search. You will see the main menu.



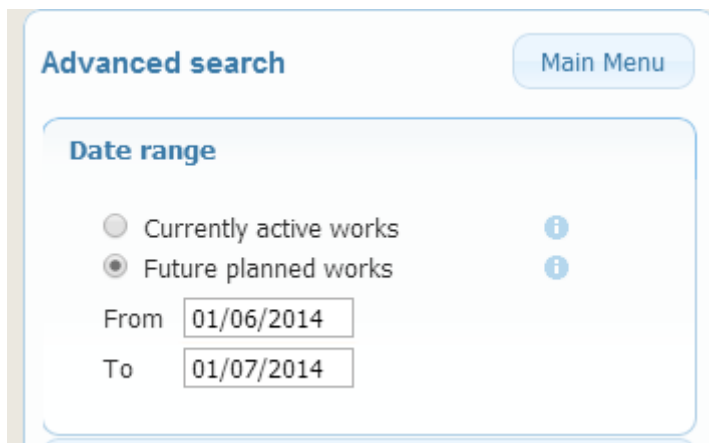
Search

- You can perform a search for works using specific criteria by selecting Search from the main menu. You will see a menu with tabs labelled Date range, Traffic impact, Obstruction type, Area, Road and Advanced options.

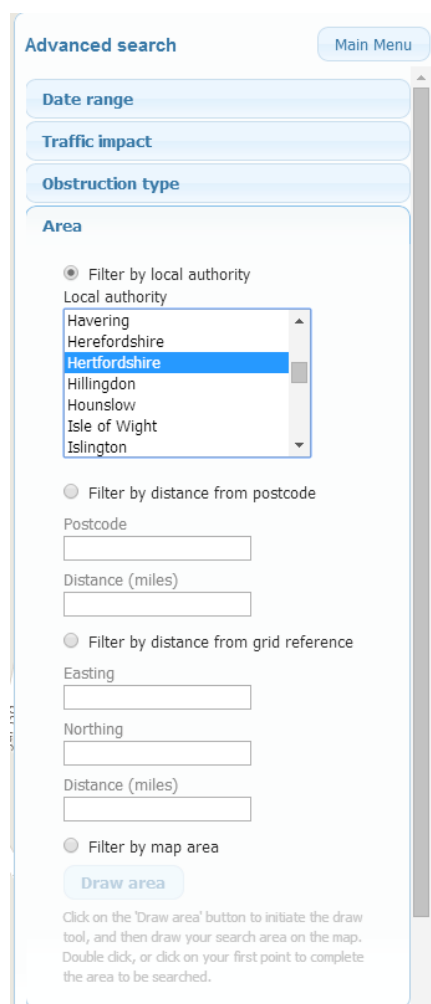


section three

- Expand these tabs to reveal fields and menus so you can create a search for your specific needs. For example, if you want to see works only promoted by National Grid Gas in Hertfordshire between the 1st of June and the 1st of July 2014, enter the dates in the Date range tab;

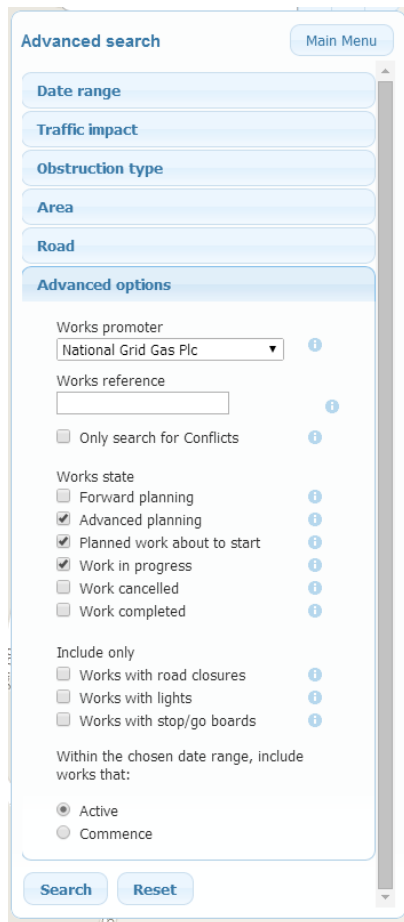


select Hertfordshire in the Area tab;



section three

and select National Grid Gas Plc from the Works promoter drop down menu in the Advanced options tab,



The screenshot shows the 'Advanced search' interface with the 'Advanced options' tab selected. The interface includes a 'Main Menu' button at the top right. Below it are several filter categories: 'Date range', 'Traffic impact', 'Obstruction type', 'Area', and 'Road'. The 'Advanced options' section contains the following settings:

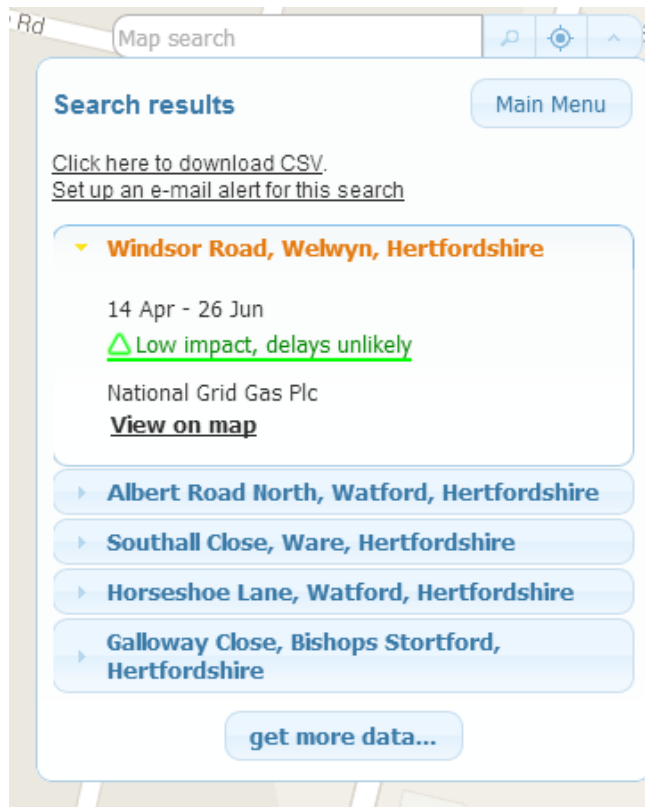
- Works promoter:** A dropdown menu set to 'National Grid Gas Plc'.
- Works reference:** An empty text input field.
- Only search for Conflicts:** An unchecked checkbox.
- Works state:** A list of checkboxes where 'Advanced planning', 'Planned work about to start', and 'Work in progress' are checked, while 'Forward planning', 'Work cancelled', and 'Work completed' are unchecked.
- Include only:** A list of checkboxes where 'Works with road closures', 'Works with lights', and 'Works with stop/go boards' are all unchecked.
- Within the chosen date range, include works that:** A section with two radio buttons, 'Active' (selected) and 'Commence'.

At the bottom of the form are 'Search' and 'Reset' buttons.

then press 'Search'.

section three

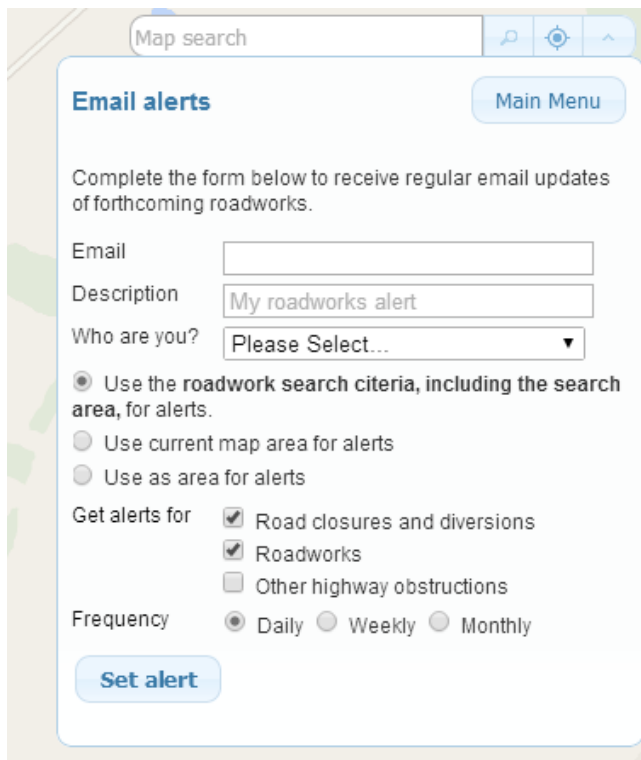
- The first five results are displayed. Clicking on the location name will reveal more information about each work, such as the start and end date, the works promoter and the traffic impact. You can see the additional information about each work by clicking View on map.



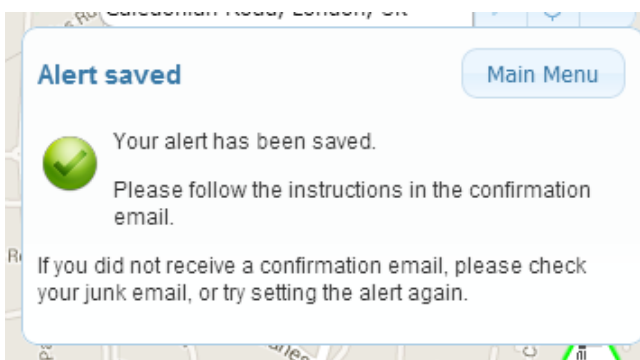
- If you would like to see more search results, click get more data.
- You can download a CSV of the results for your search by clicking Click here to download a CSV.

section three

- You can set up an email alert for your search by clicking Set up an e-mail alert for this search. Ensure the radio button labelled Use the roadwork search criteria, including the search area, for alerts is selected.



To set the alert, enter your email address and a description of the alert (which is useful if you would like to set multiple alerts); select the best option from the drop down menu next to Who are you? (this is for ELGIN's information and allows us to improve our services by identifying who is using the email alerts function); choose the criteria or area you would like to receive the alert for; choose what information you would like included in the alerts next to Get alerts for; and choose how often you would like to receive the alert. Click Set alert. You will then see a dialogue box explaining that you will receive a confirmation email to the specified address containing instructions.



Information about confirming the subscription can be found in the Email Alerts section of this guide.

section three

- If you would like to refine your search, return to the main menu, below, and click Search You can also come back to your search results if you navigate away (to Map layers, for example) by selecting Results in the main menu.

Hint: You can search for works within a specific geographical are by drawing a polygon on the map.

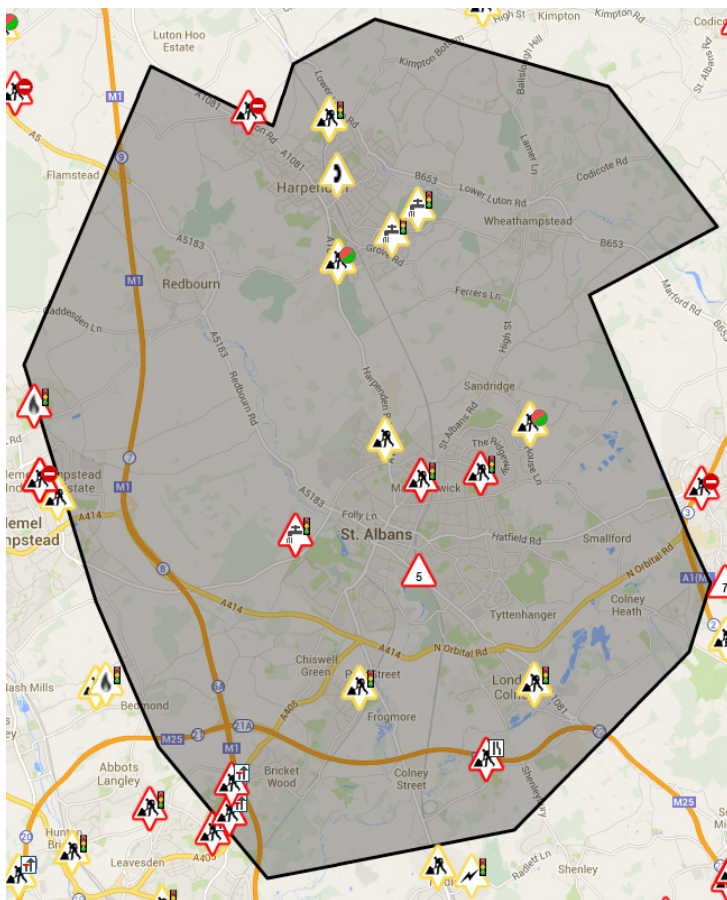
- To do this, head to the Area tab within the Advanced search menu and select the radio button next to Filter by map area. Then press Draw area.

☒ Filter by map area

Draw area

Click on the 'Draw area' button to initiate the draw tool, and then draw your search area on the map. Double click, or click on your first point to complete the area to be searched.

Draw your search area on the map and double click, or click on your first point, to complete the area to be searched. Your selected area will be shaded grey.

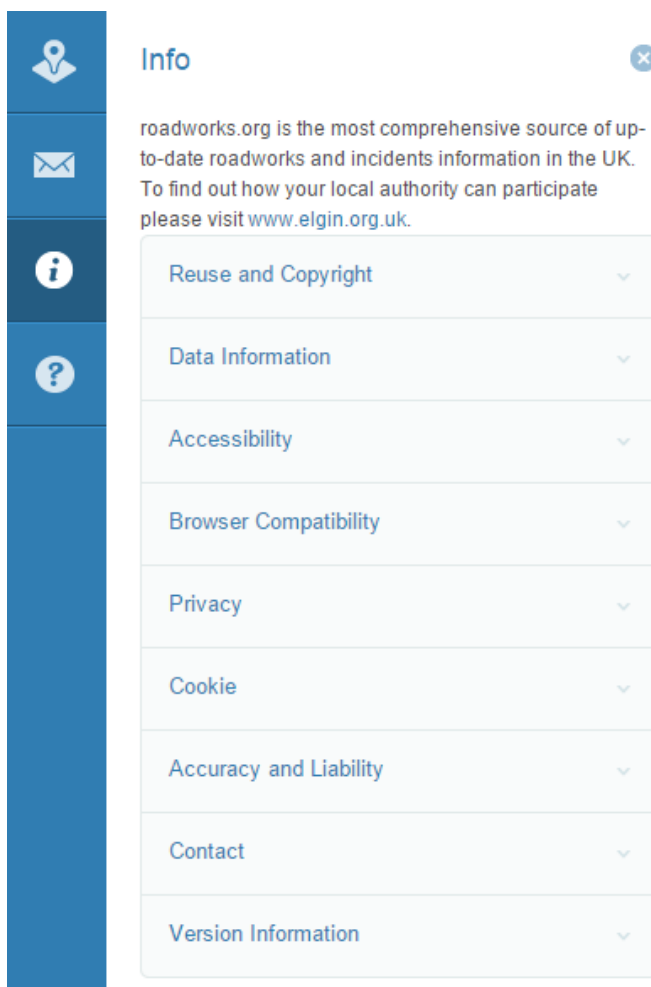


When you click Search, only works within the displayed area (along with other criteria you have set) will be displayed. You can then create an email alert for road works, closures and diversions within this area.

section four

More information

- Additional information about subject areas such as those pictured below can be accessed by selecting information icon from the left menu. Clicking each tab that appears in the list will reveal information about that subject.



The question mark in the left menu will redirect you to support.roadworks.org.

If you would like to contact the team at ELGIN, you can reach them by email at info@elgin.org.uk or by telephone on 0207 127 6955.

If you notice any potential errors with any functionality on roadworks.org, please email support@elgin.org.uk or phone 0207 127 6957.

ELGIN

John Carpenter House

John Carpenter Street

London

EC4Y 0AN

e: info@elgin.org.uk

t: 0207 127 6955