

Covid Response Guide

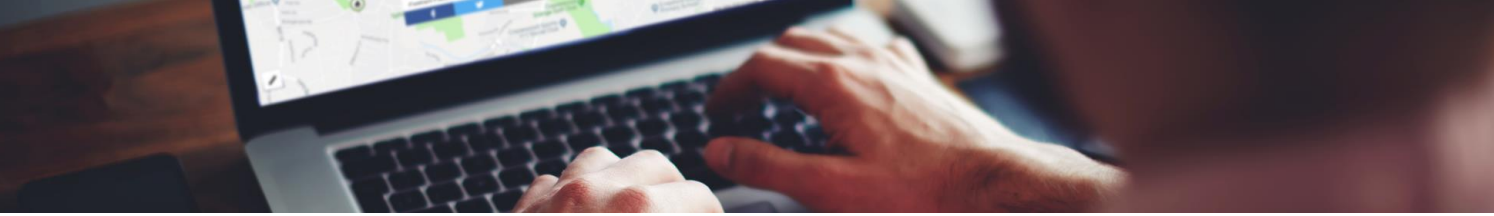
Plotting Covid-19 road changes with one.network

How to plot Covid-19 road changes

First, Create a new group – ‘Covid-19 road changes’. This will allow you to group all of your Covid-19 related road changes and find them easily later.

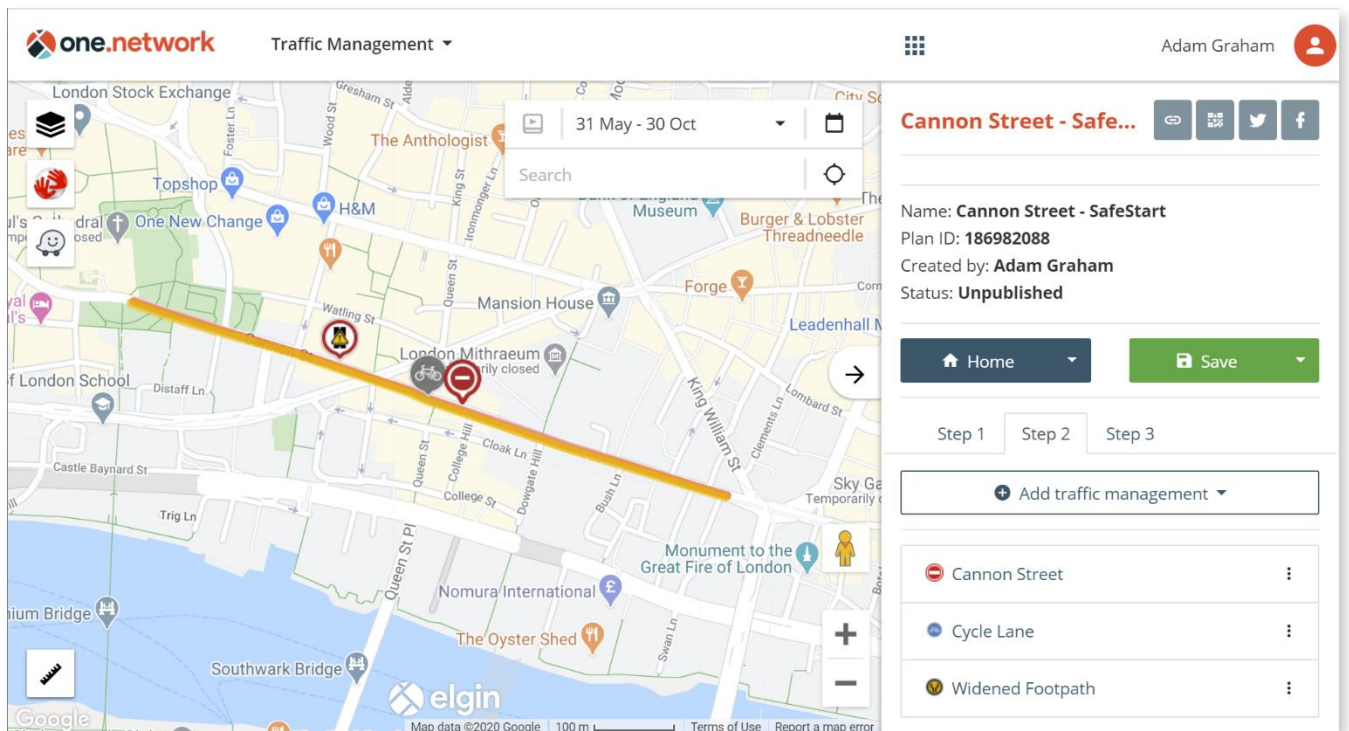
Next, Create a new Plan for each set of road changes, just like you would for all of the restrictions linked to a streetworks:

- **Step 1:**
 - a. Add the name for this group of road changes as the **Plan name**.
 - b. Select Covid-19 Road Change from the **Category** dropdown.
 - c. **Plot the location** as a point on the map. Remember that the location you choose will be where the Covid-19 road changes icon appears on the map, so keep that in mind when plotting.
 - d. The **Description** field is critical, this allows you to share more information about the road changes with the public. Include an easy to read description of what the changes are and why they are in place.
 - e. Setting accurate **Dates** is extremely important as these will be shared with all of the major mapping providers.
 - i. Set the **Start date** and **Start time** to the first time any part of the plan will be in force.
 - ii. Set the **End date** and **End time** to the last time any part of the plan will be in force (if this is not known then select a future date and set a reminder to review – 1st October for example).
 - iii. Add **enforcement patterns** if the plan is not in force 24/7.
 - f. Don't forget to add the road changes plan to your Covid-19 road changes **Group**.
- **Step 2:** It is critically important to add one step 2 item for every type of traffic restriction, don't forget to plot road closures, lane closures and parking restrictions!
 - a. To communicate the most disruptive form of traffic management, a road closure, use Live Link to push road closures in real-time straight into sat-nav and mapping devices.



- b. If the **Dates** for the individual restriction match the plan, then inheriting them from Step 1 will ensure the dates stay consistent. However, if the direction of a closure changes based on the time of day then set independent dates so the restrictions are communicated accurately. If the restrictions are not in force at all times then create an Enforcement pattern.
 - c. When setting the **Location** use the 'Plot route' option if possible rather than entering manually this allows us to reflect the geometry of the restriction accurately for all mapping providers. *Tip: once plotted move the restriction symbol on the map to prevent multiple symbols overlapping.*
 - d. Always enter the **Name** for a restriction, this will allow you to easily find and modify the restriction in the future if needed.
- **Step 3:**
 - a. Don't forget to **Publish** your road changes to make them visible on the one.network map.
 - b. After publishing you can share the details to Facebook or Twitter using the social media icons in the top right.

The end result should look something like this:



Further Support

If you need more information on how to plot Covid road changes on one.network, please email support@one.network or call 0207 127 6955.